

TRAIL CAMERA



USER MANUAL



1080P full
hd

0.3s

Fast trigger
time

120°

Detection angle



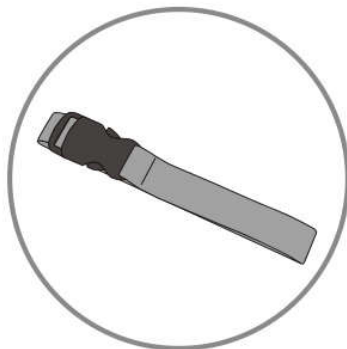
Rugged
waterproof

PACKING INCLUDES



◀ Camera

Manual ▶



◀ Mounting Strap

USB Cable ▶



◀ High gain
Antenna

SPECIFICATIONS

Cellular/Wireless

Frequency	2G(GSM) HC810M 3G(WCDMA) HC810G
-----------	------------------------------------

Photo recording

Photo resolution	20 MP
File format	JPG
Time lapse mode	5min/30min/60min
Multi-shot mode	Up to 9 photos per detection
Stamp (photos and video)	Date, time, temperature (°C/°F) and moon phase
Capture mode	Color by day, black and white by night

Video recording

Video resolution	1920 x 1080/30fps (FHD)
File format	AVI/H.264
Sequence length	Adjustable from 10 to 90 s
Capture mode	Color by day, black and white by night

Audio

Sound recording	N/A
-----------------	-----

(automatically recorded in video mode)

Memory storage

Support	<ul style="list-style-type: none">•Internal memory: none•External memory : Micro SD card (up to 64 GB)
---------	---

Viewing

Built-in screen	TFT 2.4"
-----------------	----------

Power source

Alkaline or lithium batteries	8 x AA
-------------------------------	--------

Lithium battery pack	Rechargeable battery pack(LIT-801)
----------------------	------------------------------------

External (3.5X1.5mm Jack)	DC12V 1000mA ,(6V~12V)
---------------------------	------------------------

Detection system

Motion sensor	3xPIR
---------------	-------

Detection angle	120°
-----------------	------

Detection range	Adjustable from 1 to 80 ft
-----------------	----------------------------

Trigger speed	0.3 sec
---------------	---------

Delay between each detection	Adjustable from Instant to 30 min
------------------------------	-----------------------------------

Night time illumination system

LEDs	42 LEDs
------	---------

Flash range	< 90 ft
-------------	---------

Exposure	Automatic infrared level adjustment
----------	-------------------------------------

Optical field of view

120°

Dimensions

135mmX90mmX76mm

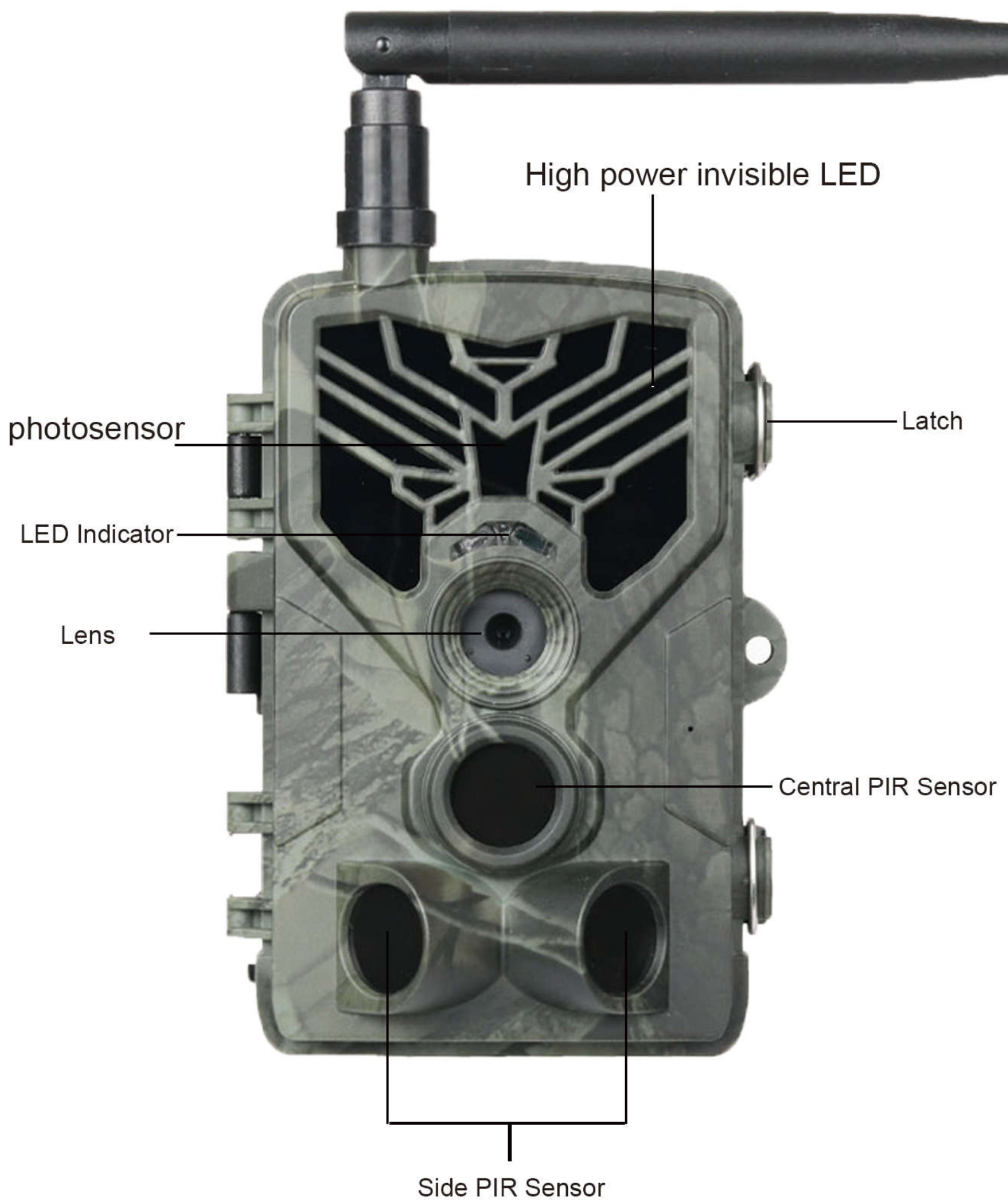
Recommendations

Operating temperature	(-30 °C to + 50 °C) (-22 °F to +122 °F)
-----------------------	---

Storage temperature	(-40 °C to + 60 °C) (-40 °F to +140 °F)
---------------------	---

THE SIZE LIST FOR TRANSMITTING TYPE

Version Function	4G	3G	2G
MMS	<100KB(Default), Options:200KB/100KB/50KB (depend on the limit of the local operator)		
SMTP	<40MB (Picture and Video)	<1MB (Picture only)	Same with MMS
FTP	<40MB (Picture and Video)	Not support (need to be customized)	Not support (need to be customized)
SIM	Support		
Live Show	Under development (Only in 4G camera)		



INSTALLING BATTERIES



IF USING AA - ALKALINE BATTERIES

1. Pull the gap lightly and open battery compartment.

2. Reference the battery icons located on the inside of the battery compartment. Insert the batteries according to the positive and negative battery icons.

3. Close the battery compartment to resist water and dust.



NOTE: Installing any of the 8-AA batteries in the wrong direction may cause the batteries to leak acid and could possibly explode, causing camera failure and damage to the battery compartment.

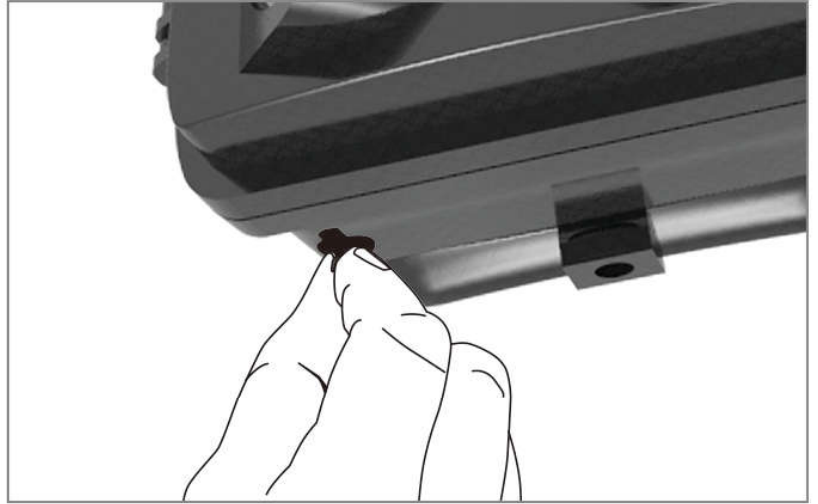




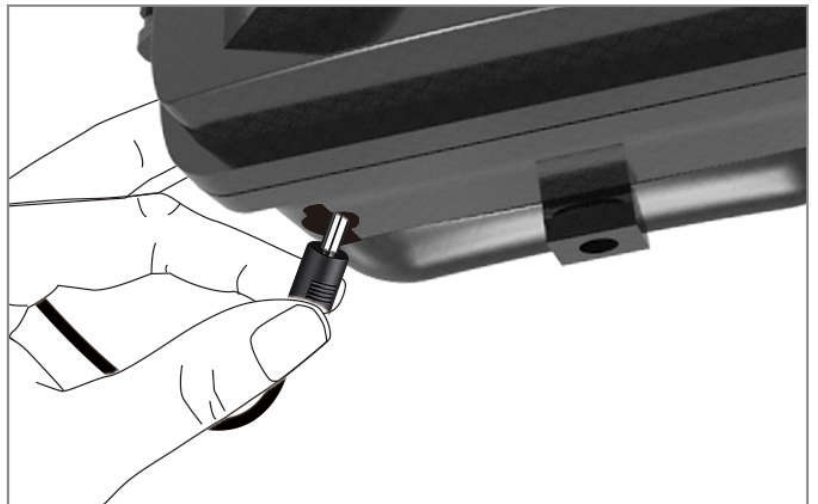
BATTERIES CONT.....

IF USING 12V DC POWER SOURCE

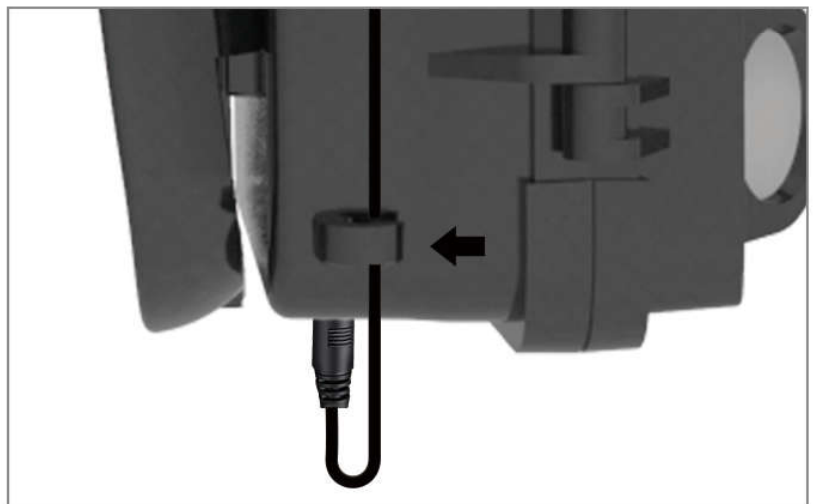
1. Remove the rubber port cap at the bottom of the camera . Using a universal 12V DC cord, plug in to the bottom port option.



2. Run the cord to the side of the camera where there is a hook provided behind the hinge of the camera door. This will support the power cord and take pressure off of the connection point



3. When not in use, replace the rubber port cap at the bottom of the camera to protect the 12V DC universal plug-in port.



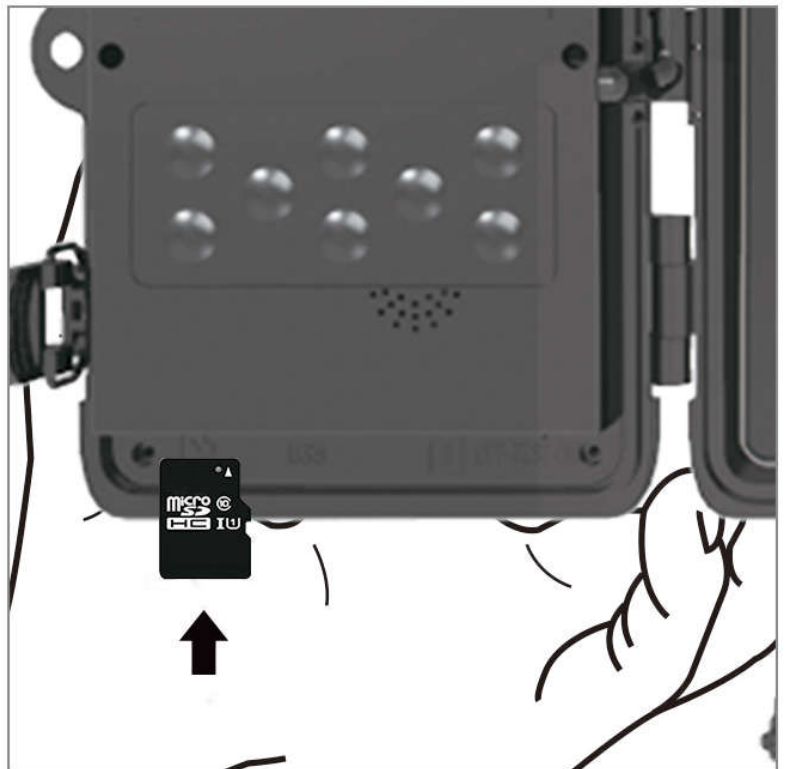
MEMORY CARD INSTALL

INSTALL MICRO-SD CARD

1. Insert the Micro SD card with the contacts facing away. The Micro SD card should slide in freely with little resistance. Continue pressing the card inward until you hear a click. This means the Micro SD card is locked in place and ready for use.



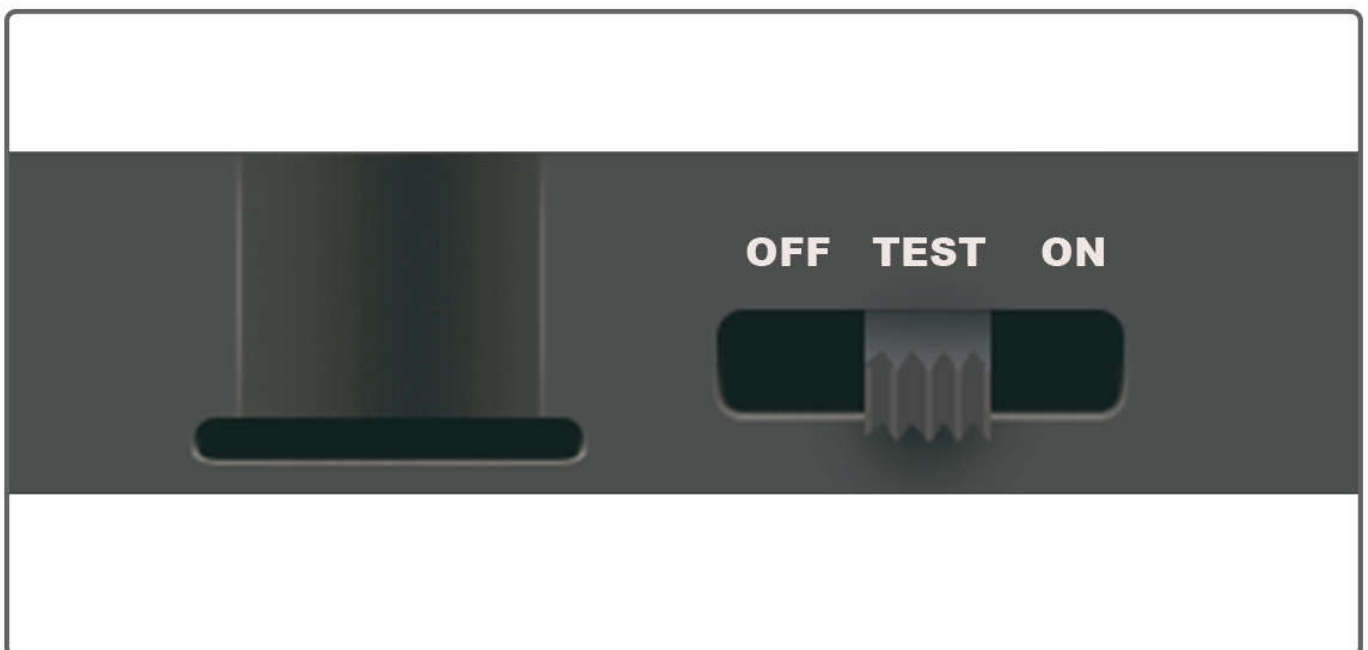
2. To remove Micro SD card, press the card inwards to release.



QUICK START

Enter to TEST mode

Slide the mode switch from OFF to TEST position to activate the camera and view the user setup screen.

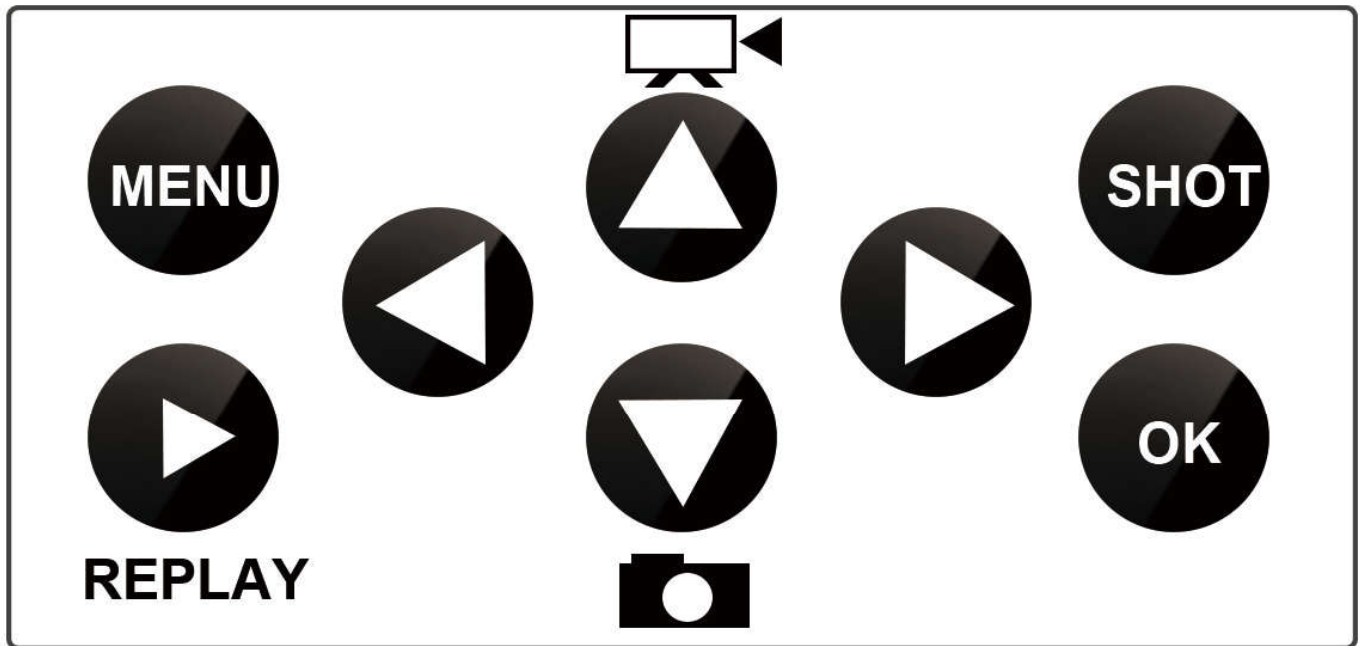


A SIM card is needed(basic model HC810A, does not need SIM card). Make sure your SIM card supports Short Messaging Service (SMS), Multimedia Messaging Service (MMS) and data traffic service.

When SIM card recognized by camera, the camera display will show carrier's icon.


There is a control panel with 8 keys when you open the camera.


OPERATING BUTTONS



MENU: Open the Settings menu using the MENU button

REPLAY: Press this button to start the replay mode

 : Change to the manual recording mode for video recordings

 : Change to the manual recording mode for taking photos

SHOT: Manually take a video or photo depending on the set recording mode. Video recordings are ended by pressing the SHOT button

 : Press it to start the video, press it again to stop

The best position to place the camera could be found through this TEST mode. Generally, it is recommended to place the camera at the height of 3 to 6 feet (1 to 2 meters) to the ground.

Press  directly to get the IMEI (in the TEST mode).

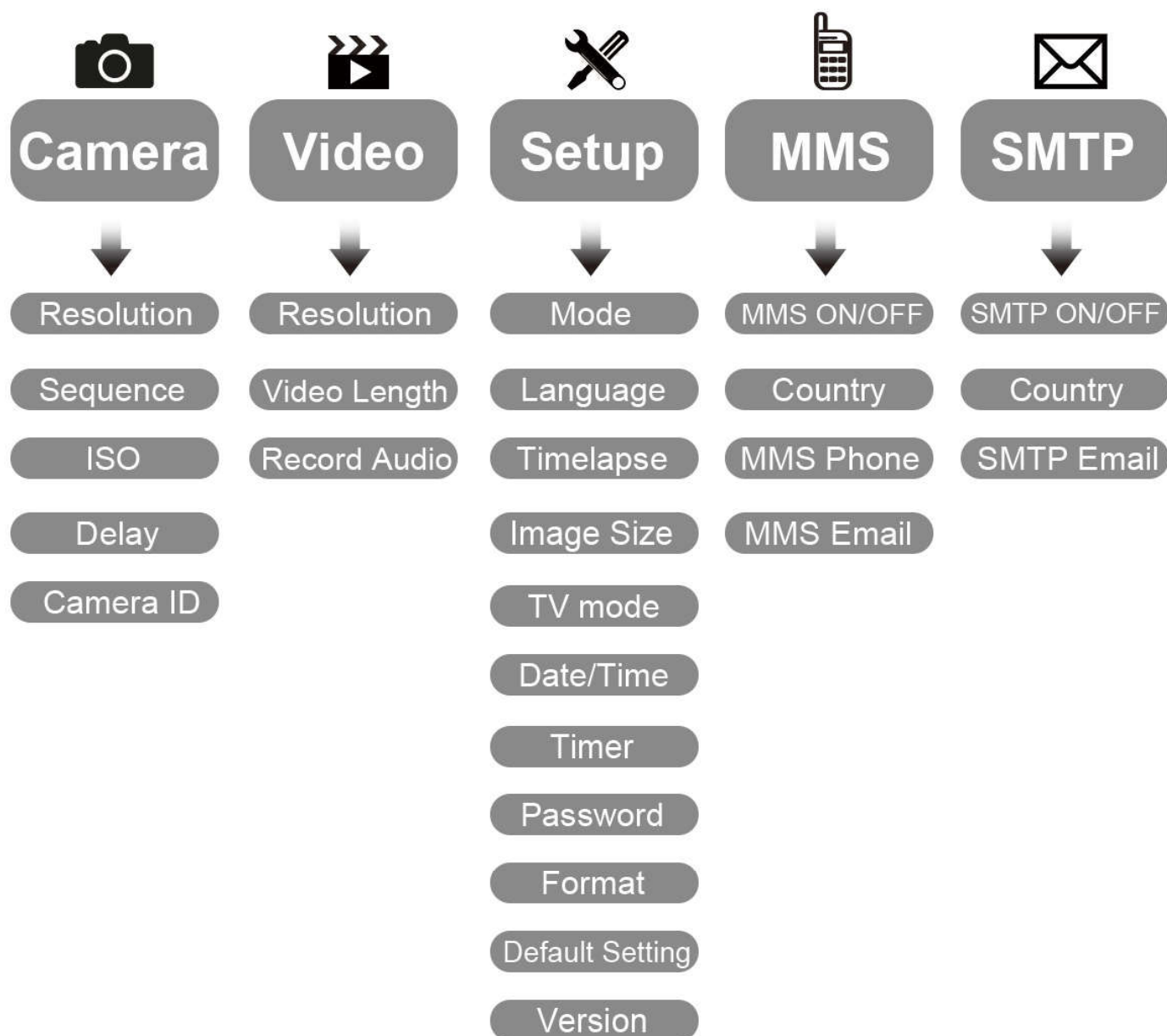
Enter to ON Mode

After you complete all the setting, slide power switch to ON to enter to auto working mode. The motion indicator will flash red for about 5 seconds and the camera starts working after that. It will immediately take pictures or record videos when person or animal enters into the area of the PIR sensor.

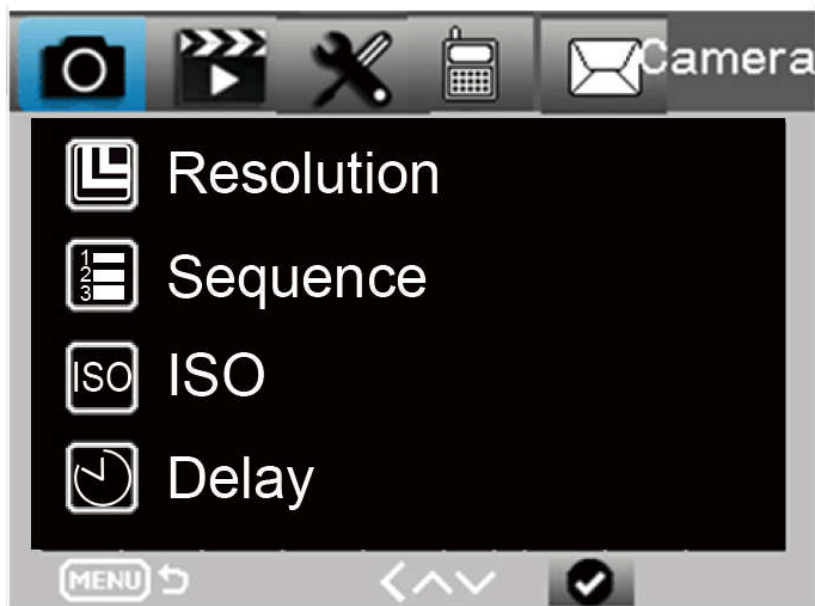
- **Cautions:** To avoid potential false triggers due to temperature and motion disturbances, please do not aim the camera at a heat source (e.g.: the sun, heated stone or metal) or nearby tree branches and twigs. The ideal direction to aim at is the north and the open place without heat source. Also, remove any twigs close to the front of the camera.

Advanced Setting

Menu list



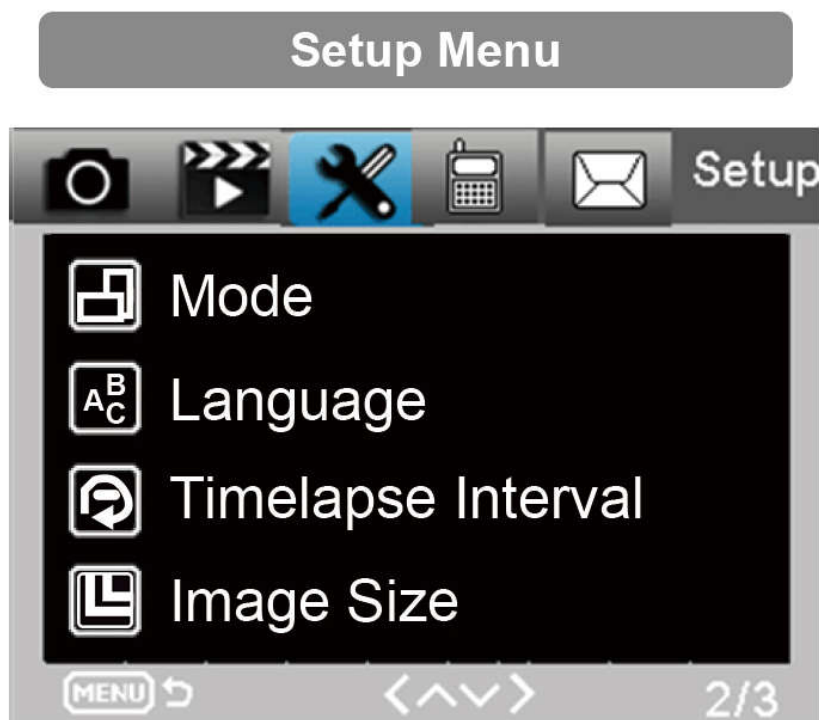
Camera Menu setting



Camera	Sub menu	Description
Resolution	20MP, 16MP, 12MP	Photo Size
Sequence	1/3/6/9	Number of photos taken every time
ISO	Auto, 100, 200, 400	The camera exposure level
Delay	1/5/10/30 sec/min	Waiting time from the last taking
Camera ID	0-0-0 0-0-0	Camera ID



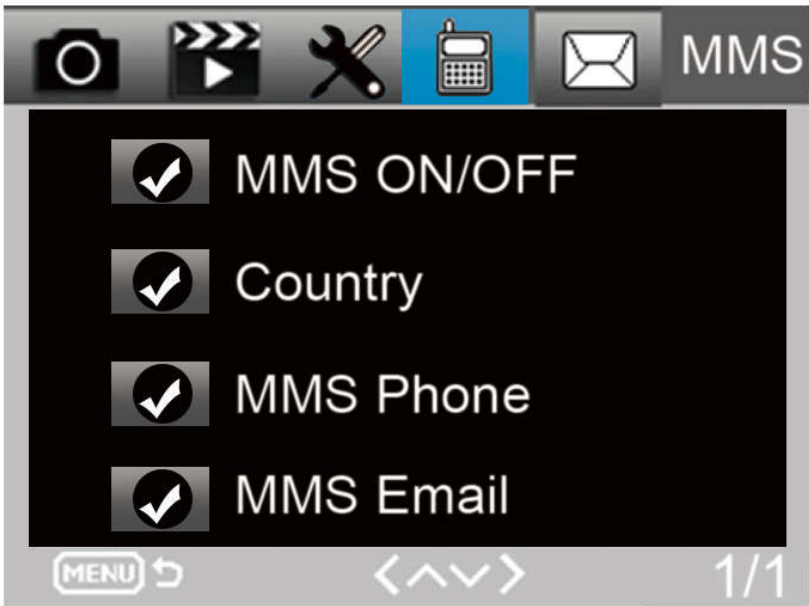
Video	Sub menu	Description
Resolution	1080P, 720P, WVGA, VGA	Video size
Video Length	10S, 30S, 60S, 90S	The time length of video
Record Audio	On, Off	If On, Video sound is recorded



Setup	Sub menu	Description
Mode	Camera, video, camera& video, Timelapse	Taking picture, video, picture and video, taking picture regular
Language	English, Francais, Deutsch and so on	Camera Menu language
Timelapse interval	5/30/60 Min	Taking picture or video every 5/30/60 minutes constantly
Image Size	Small/Normal/Big	Size for transmitting picture Small <100KB Normal <150KB Big <200KB
TV Mode	NTSC, PAL	TV play mode

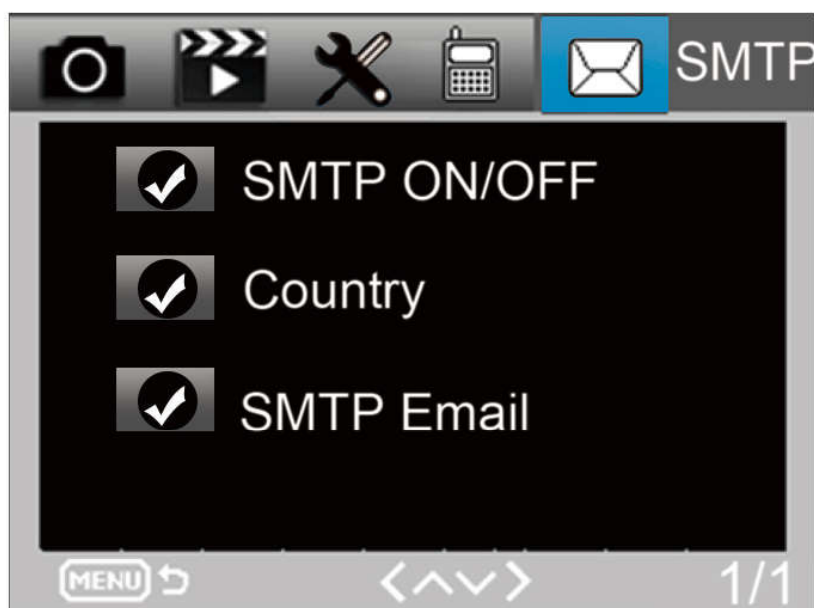
Setup	Sub menu	Description
Date/Time	2018-09-03 16:37:25	Year-Month-Date Hour: Minute:Second
Timer	ON, OFF	If On, the camera only works in the period
Password	****	4 digital numbers(1314 Universal password)
Format	SD Card	All files of memory card will be deleted
Default Setting	return menu setting to defaults	Cancel/OK
Version	03/09/2018 16:37:25	Camera version

MMS Menu



MMS	Sub menu	Description
MMS ON/OFF	Off/On	MMS Off/On
Country	Set in MMSCONFIG	Operator name
MMS Phone	Set in MMSCONFIG	Receiver's phone of mms
MMS E-mail	Set in MMSCONFIG	Receiver's mail of mms

SMTP Menu

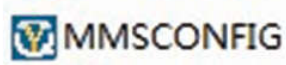
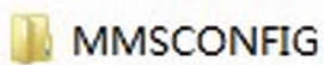


SMTP	Sub menu	Description
SMTP ON/OFF	Off/On	SMTP Off/On
Country	Set in MMSCONFIG	Operator name
SMTP E-mail	Set in MMSCONFIG	Receiver's mail of picture

MMSCONFIG SETTING

► Load CD into the computer

► Click the MMSCONFIG.exe file from MMSCONFIG folder



► Fix Camera, Video and System Menu Setting
(the second way to set the menu)

Note: If you have done the menu setting by remoter in TEST mode, you can skip.

► Fix MMS Setting

Auto MMS Mode:

In Auto MMS Mode, there is configured information for selection

- a. Choose Country
- b. Choose Operator
- c. Fill in the phone number in the right-side blank column as receiver
- d. Fill in the email address for photos receiving

Menu	MMS	SMTP
<div> <div> Mms Setting MMS ON/OFF: ON MMS MODE: Auto Country: Germany Operator: E-Plus Picture No./day: 99 </div> <div> Phone Setting Phone1: <input type="text"/> Phone2: <input type="text"/> Phone3: <input type="text"/> Phone4: <input type="text"/> </div> </div>		
<div> <div> Gprs Setting APN: mms.eplus.de Account: mms Password: eplus </div> <div> Email Setting Email1: <input type="text"/> Email2: <input type="text"/> Email3: <input type="text"/> Email4: <input type="text"/> </div> </div>		
<div> <div> Server Setting MMSC: http://mms/eplus IP: 212.23.97.153 Port: 8080 </div> </div>		
<div> <input type="button" value="Save"/> <input type="button" value="Default"/> <input type="button" value="Load"/> <input type="button" value="About"/> </div>		

Manual MMS Mode:

If there is no configured information for selection, please choose Manual MMS Mode.

Firstly, User need to choose manual and contact SIM card carrier to get and fill in the APN, Account, Password, MMSC, IP and Port information. Secondly, fill in receiver phone number or E-mail address at right side.

Camera Parameter Setting

Menu MMS SMTP

Mms Setting

MMS ON/OFF ON

MMS MODE Manual

Country Other

Operator Other

Picture No./day 99

Gprs Setting

APN

Account

Password

Server Setting

MMSC

IP

Port

Phone Setting

Phone1

Phone2

Phone3

Phone4

Save Default Load About

Fix SMTP Setting

This way of sending pictures is also called data transmission. It's highly popular now, the picture is sent from email to email, only charging the data cost.

Auto SMTP Mode:

In Auto SMTP Mode, there is configured information for selection

- a. Choose Country
- b. Choose Operator
- c. Choose Type of email
- d. Add sending email address on the left
- e. Add sending email address password on the left
- f. Add receiving email address on the right

The screenshot shows a web-based interface titled "Camera Parameter Setting" with a tabbed menu at the top containing "Menu", "MMS", and "SMTP". The "SMTP" tab is active. The interface is divided into four main sections:

- Smtp Setting:** Contains four dropdown menus: "SMTP ON/OFF" (set to "ON"), "SMTP MODE" (set to "Auto"), "Country" (set to "Austria"), and "Operator" (set to "A1").
- Gprs Setting:** Contains three text input fields: "APN" (filled with "A1.net"), "Account" (filled with "ppp@a1plus.at"), and "Password" (filled with "ppp").
- Server Setting:** Contains a "Type" dropdown (set to "Other"), three radio buttons for "No SSL" (selected), "SSL", and "STARTTLS", and four text input fields for "Server", "Port", "Email", and "Password".
- Email Setting:** Contains three text input fields labeled "Email1", "Email2", and "Email3", all of which are currently empty.

At the bottom of the window, there is a blue bar with four buttons: "Save", "Default", "Load", and "About".

Camera Parameter Setting

Menu MMS SMTP

SMTP Setting

SMTP ON/OFF: ON

SMTP MODE: Manual

Country: Other

Operator: Other

Picture No./day: 99

Phone Setting

Phone1:

Phone2:

Phone3:

Phone4:

GPRS Setting

APN:

Account:

Password:

Server Setting

MMSC:

IP:

Port:

Email Setting

Email1:

Email2:

Email3:

Email4:

Save Default Load About

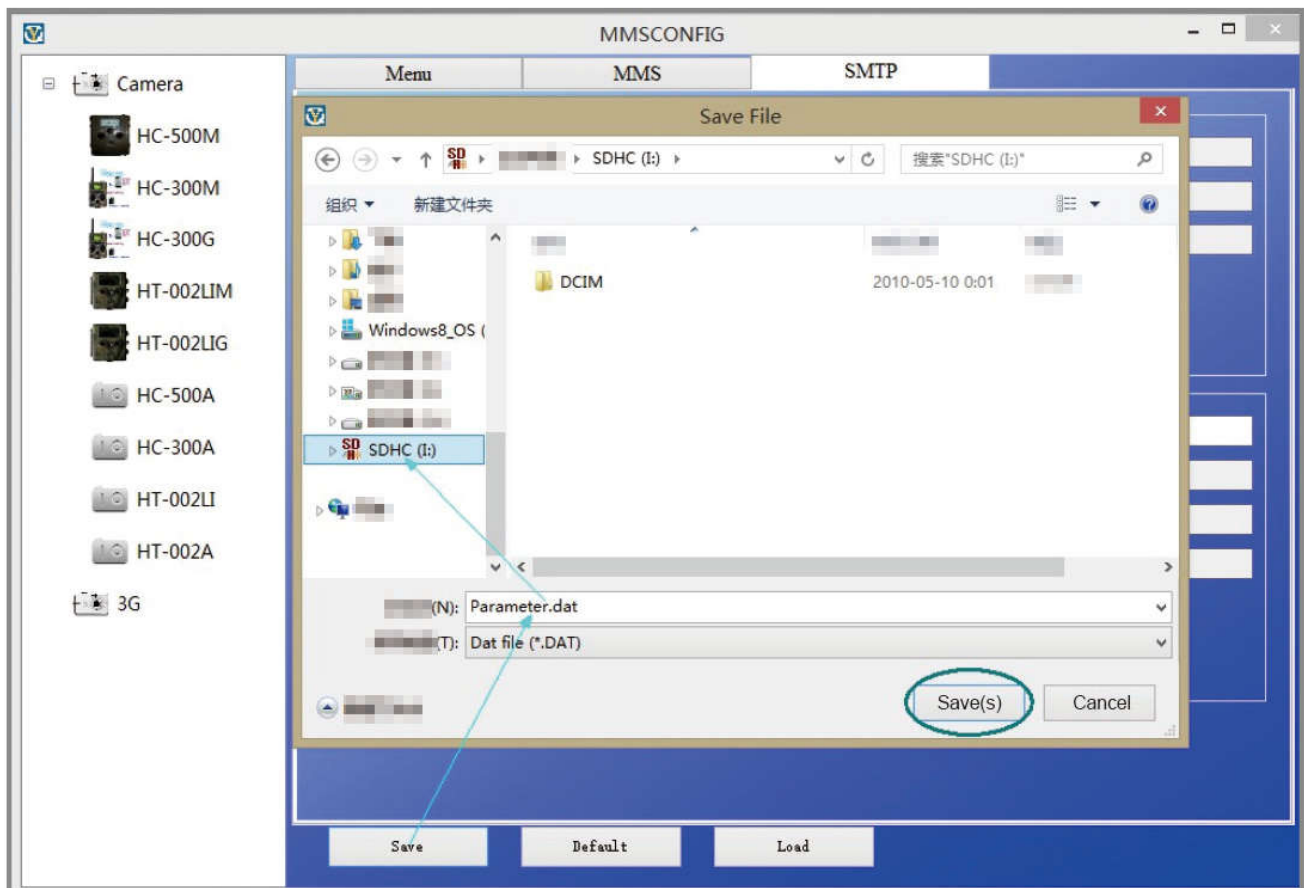
Manual SMTP Mode:

If there is no configured information for selection, please choose Manual SMTP Mode.

Firstly, User need to contact SIM card carrier to get APN, Account, Password information and fill in; contact sending email provider to get server, port information.

- a. Add sending email address on the left
- b. Add sending email address password on the left
- c. Add receiving email address on the right

Save the file “Parameter. dat” to Micro SD card



SMS COMMAND CODE

This camera support SMS remote control, control camera by sending SMS code below.

The SMS codes are:

code	Function	Meaning
530	Camera Start	Start Working
531	Camera Sleep	Stop Working
500	Capture	Camera takes a picture, then sends it to related phone or email(record on MMS,SMTP site)
505	Capture and get pic (MMS mode)	Camera take a picture, then sends it to current phone
520	Get Pic information	Camera send a a text with picture number, SD card capacity, battery lever.

TROUBLE SHOOTING

Camera Doesn't Capture Subject of Interest

- Check the PIR sensitivity. For warm environmental conditions, set the Sensor Level to “Low” and for cold weather use, set the sensor for “High”.
- Try to set your camera up in an area where no heat resources are in the camera's field of view.
- In some cases, set the camera near to water will make the camera take images with no subject in them.
- Try to aim the camera over ground.
- Try to set camera on stable and immovable objects, i.e.: large trees.
- At night, motion detector may detect beyond range of the IR illumination, reduce distance setting by adjusting sensor sensitivity.
- Rising sun or sunset can trigger sensor. Camera should be reoriented.

- If person/animal moves quickly, it may move out of the camera's field of view before photo is taken. Move camera further back or redirect camera.

Camera Stop Taking Images

- Please make sure that the memory card has enough memory storage. If the card is full, camera will stop taking images.
- Check batteries to make sure that alkaline, NIMH or lithium AA batteries left power is enough for camera to work
- Make sure that the camera power switch is at the "On" position and not at the "Off" or "Test" modes.
- When MMS/SMTP function is on, there will be around 1minute interval for camera to send out photo before camera take the next photo.
- Please format the memory card when you first time to use it or change to use another memory card

Night Vision Flash Range Doesn't Meet Expectation

- 4pcs AA batteries is not able to support camera night vision ability, please install 8 pcs AA batteries for better battery life
- make sure that batteries are fully charged or left power is enough.
- High-quality 1.5V NIMH or Lithium rechargeable AA batteries can offer much better Infra flash range than alkaline batteries.
- To ensure accuracy and quality of night image, please try to mount camera on dark environment without obvious light sources.
- To ensure accuracy and quality of night time image, please mount camera to dark environment without any obvious light sources;
- Certain surroundings (like trees, walls, ground, etc.) within flash range can get you better night time images; please do not aim camera to total open field where there is nothing within IR flash range to reflect flash back, it's like shinning a flashlight into sky in night, you just can't see anything, same does camera.

Camera Take Images but won't send them to mobile phone /E-mail

- If you choose manual mode, the info you fill in may has problem, Contact SIM card carrier to confirm all the info such as Apn, server, port is correct.
- When you turn on MMS function, it doesn't need to add international phone zone number before the phone number, just fill in your mobile phone number.
- When you turn on SMTP function, please make sure that your email's server and port is correct, some email server will reject email as SPAM, you can try to find your email at SPAM box or contact seller to get test email and have a try.
- Don't rename parameter.dat, you can check your phone number or E-mail by camera menu, please save parameter.dat at the boot of memory card, otherwise camera can 't recognizes the parameter.dat