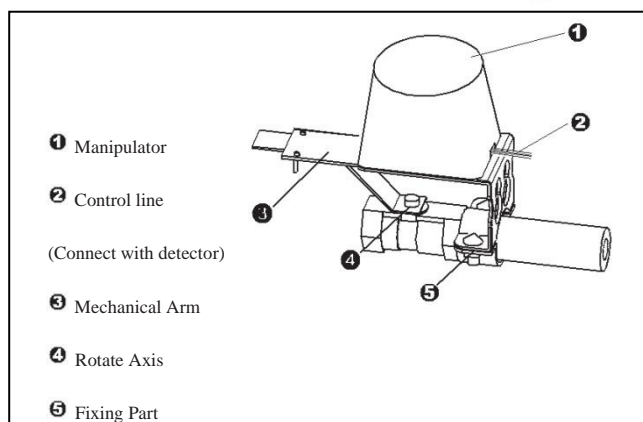
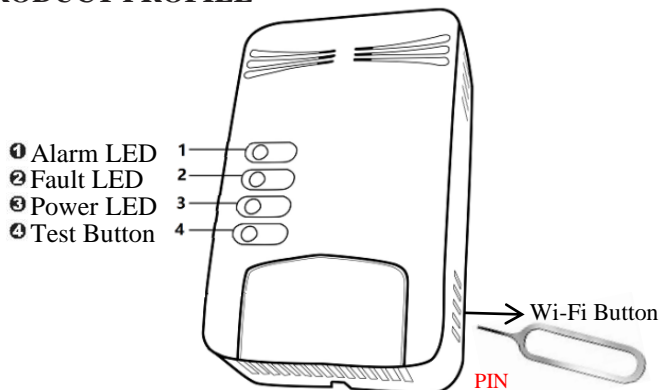


MANUAL FOR COMBUSTIBLE GAS DETECTOR

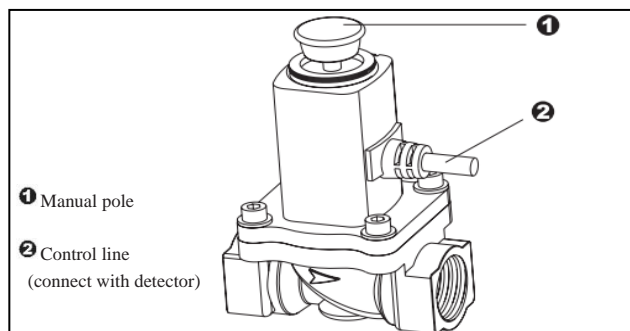
PRODUCT INTRODUCTION

The product is wall mounted gas detector with high stability(hereinafter called detector) . It is used for detecting leaking gas. Advanced semiconductor sensor is adopted to ensure high stability and long life. It is convenient for mounting. The product is suitable for the safety of residential house, villas, hotels, markets, boarding house etc.

PRODUCT PROFILE



Manipulator (optional accessory)



Electromagnetism valve (optional accessory)

MAIN FEATURE

High reliability sensor
Auto reset after alarm
MCU processing adopted
fault automatic detected
Gas type:natural gas/LPG
SMT design,high stability

TECHNICAL SPECIFICATION

Operating voltage:AC 110-240V
Rating Power: $\leq 3W$ (AC 220V supply)
Warm-up Time: 180S
Alarm Level:7%LEL
Power: Power LED Constant Green
Alarm: Alarm LED Flashing Red Rapidly
Sensor Failure: Fault LED Constant Yellow
Alarm Reset:Automatic reset when leaked gas clears
Sound Level: $\geq 85dB/m$

Operating temperature: $-10^{\circ}C \sim +50^{\circ}C$

Environment humidity: $\leq 95\% RH$ (no congelation)

Installation mode: wall mounted

Alarm output: Wi-Fi (Wi-Fi type)

Optional Relay output NO/NC (network type)

Optional RF 315MHz or 433MHz (wireless type)

Radio distance: 100m in open area (wireless type)

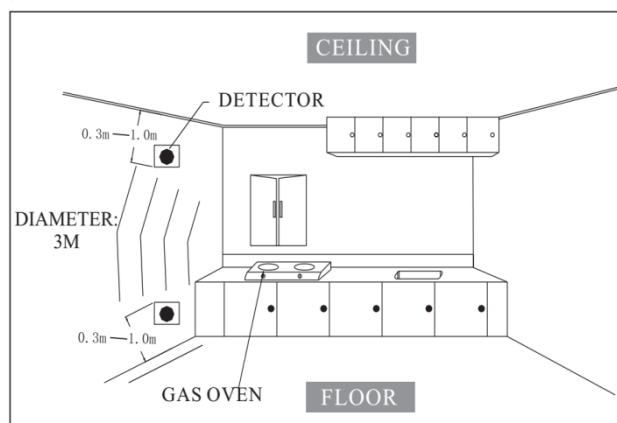
Execute criterion : GB15322.2-2003

Outline size : 123*78*40mm

INSTALLATION

1. Make sure the detecting gas type is heavier or lighter than air.(heavier gas type: LPG. lighter gas type: natural gas,artificial coal gas,marsh gas.)
2. Install detector at proper place according to gas type.

To detect gas heavier than air, please install within a radial distance of 1.5 meters from the gas source at a height of 0.3-1 meter above ground. To detect gas lighter than air, please install within a radial distance of 1.5 meters from the gas source, 0.3-1 meter under the ceiling.(see the drawing below.)



3. Fix the screw into the wall firmly, then hang the detector.
4. Avoid installing the detector close to the following sources of interference: direct air flow from vents, fans, doors, windows, sources of steam, oil vapor, etc.
5. All wires installation must accord with the national and local effective laws and criteria. The wires must have the suitable size and colorful marks for avoiding connecting error. And unsuitable connection of wires will result in the alarm error while gas leaking happened.

OPERATING INSTRUCTION

The gas detector can be used independently, or with wired networks output functions optional.

1. Independently

Choosing a suitable position to install the detector according to the installation.With AC 85-260V power supply,once the buzzer makes a sound of "Di" , the circuit begins to preheat. After roughly three minutes,the green light indicator starts to light permanently, which indicates that detector is working properly.

2.In wired network

- (1) Choosing a suitable position to install the detector according to the installation. to connect the detector with the controller, with the N.C. or N.O. contact optional accord with the controller system.
3. While detecting the gas leaking, the red LED on, the buzzer sends out the alarm sound "Di ... Di", and output the network signal.. If the detector is connected with valve or manipulator, it will drive them to shut off the gas pipeline supply. The detector will resume to the detecting state after the gas dispersed.
4. The buzzer long beeps and the yellow LED on means the inside sensor failure. Please cut off the power, and contact the after service center.
5. If the detector runs disorderly, cut the power off and rerun again. If still in wrong, please contact the after service center.

MANUAL FOR COMBUSTIBLE GAS DETECTOR

TEST

To test the installed detector while using independently or in network, you can give some gas around in distance of 5cm to the gas convection holes by using un-ignition lighter. Testing frequently may result in reducing the sensitivity of the detector. The alarm density of gas is set according with the criteria of GB15322.2-2005. The detector will stop alarm and resume to the detecting state while the gas density reduced to lower than the alarm level. The alarm output switches can connect with the defense input switches of

NORMAL MAINTENANCE

Suggestion: the user must brush and clean the gas convection holes with a little cleanser every three months, and must retest the detector after cleaning for preventing the cleanser into the Detector.

EMERGENCY ALARM TREATMENT

The detector alarms while the gas density in air exceed the alarm level. The relative treatments as below:

1. Shut down the tube valve right away.
2. Open the window and make the air flow rapidly.
3. Extinguish all fire sources and do not use anything can make fire, e.g. lighters, matches, etc.
4. Avoiding open or close the power all kinds of electric equipment.
5. Check the reason of gas leaking, and notice the relative departments and professional persons in time.

WARNING!

1. Do not crash or knock the detector heavily. Otherwise the detector may fail to work properly.
2. The product is a combustible gas detector. Can not be used to detect toxic gases such as carbon monoxide .
3. Make sure proper wiring and power supply are applied. Without normal power supply, the detector will fail to work.
4. Maintain the detector periodically as required in this manual.
5. Use cleaner to vacuum the dust in surface every month.
6. Do not use any detergents or solvents to clean the detector. Chemicals may cause permanent damage or transient pollution to the sensor.
7. Avoid spraying air fresheners, hair gels, paints or other aerosols near the detector.
8. Test the detector by a professional every half a year. If the detector fails to work properly, repair or replace it asap.
9. The detector can reduce accidents happening, but can not guarantee a hundred percent safety. For security concern, besides proper usage of the detector, pay attention to build up safety conscious and take preventive measures in daily life.

About Wi-Fi User's Guides

1. Download "TUYA" in app store, install it and create a family name - open TUYA APP - press "+" in the upper right corner (Picture 1)
2. Go to "Security Sensor" at the left column and select "Alarm Wi-Fi" (Picture 2)
3. Then input Wi-Fi password and confirm (Picture 3)
4. Use the Pin the long-press the Wi-Fi button for 5 seconds to enter connecting mode. When the Yellow LED is on and then Green LED starts blinking, which shows the sensor is connecting
5. When the is sensor is added successfully, user can rename it, select the area (i.e. living room, kitchen, bedroom etc.) and share it with other members. In this case, other members can monitor and manage it as well. (Picture 4)
6. When the alarm is triggered, a warning message will pop up on the phone. You can click the message and enter the TUYA platform (Picture 5). The interface will be at Warning mode when the alarm is triggered and it would turn to be Release mode when the alarm is released.

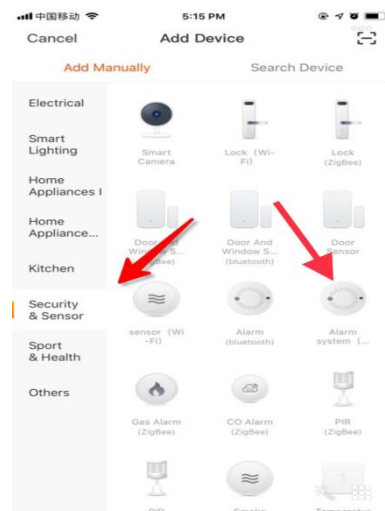
7. How to remove the sensor? Select the sensor and go to Edit page by click the button at upper right corner and then click on Remove Device at the bottom achieve the order. (Picture 6)

Note:

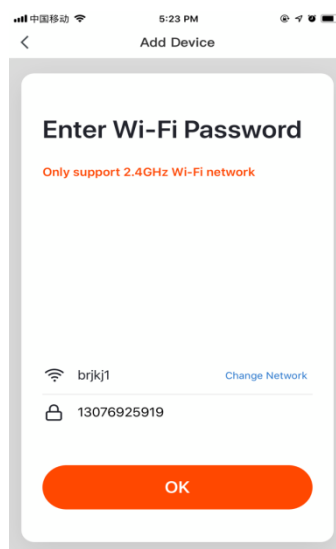
1. User may press the Wi-Fi button for 3 seconds again to enter rapid blink if the connecting is too slow.
2. If the Red LED blinks for more than 10 seconds, which means the Wi-Fi connection is poor or the sensor is unable to get WIFI signal. User may try the following solutions: #1. Move closer the sensor, mobile phone and the router. #2. Restart the router and mobile phone.
3. Please be ware that both Gas leak sensor need warm-up for around 3 mins.



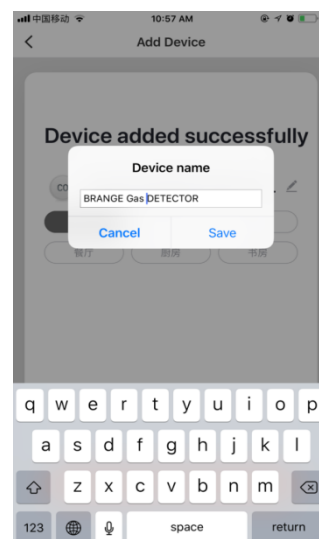
1



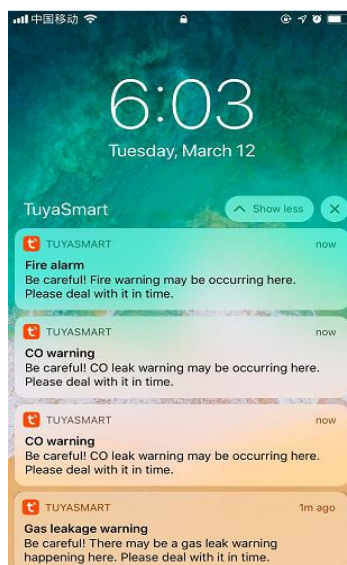
2



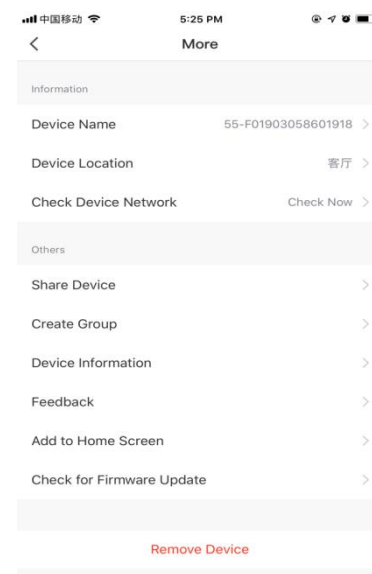
3



4



5



6