

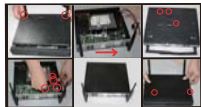


7 HD Install

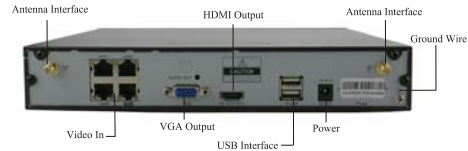
Notice that the HDD had been used need supplier recommend, and need make sure already cut off the power

Install Steps:

1. Remove the screw of the dvr
2. Connect the HDD cable and power line
3. Assmble the screw, and fix the HDD in the bottom of NVR
4. Close the cover and fix it



8 Rear Panel Description



For example,4Ch

9 Turn on/off

Confirm that AC voltage accessible matches with DVR .Ensure that the DVR power outlet connect with a good middle ground grounding. After switching power, the device started, 【POWER】 light is on. Turn into system, if the panel status light flashing, it's normal conditions.

► Hardware description

1 Statement

- Sincerely thanks for purchasing our products, pls contact us if any problem or requirement. This manual is for network video recorder.
- This user manual may contain incorrect place in technology, place not matching with product function or operation, or printing mistake.
- We will update our user manual according to our updating in product, and will periodically improve or updating the product and programming.
- The updating content will add in the new user manual, we won't inform.
- If the product's description in user manual is inconsistent with the real products, pls based on the real products.

2 Safety cautions

- 1.Pls don't put a container with liquid on DVR(like Vase) .
- 2.DVR should put at a ventilation place, and prevent clogged the ventilation hole.
- 3.Check the power voltage, in case of damage by wrong voltage.
- 4.DVR should work at the technical standard range of temperature and humidity.
- 5.Place DVR on level, pls avoid installing at a sharp pounding place.
- 6.Moisture dust in PCB will cause short circuit, for long-term use of the DVR, you can periodically remove dust in PCB by brush.
- 7.It will cause burst if replace battery in wrong way, we don't suggest user to replace by himself; if need replace, only use the same type or equivalent type battery, pls don't try to open or maintain the battery.
- 8.DVR installation need according to specification, you can take the national or local standard as reference.

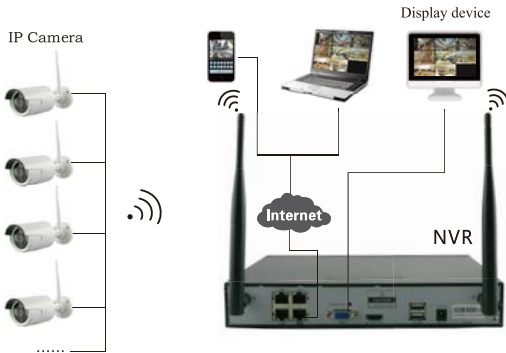
10 NVR, IPC parameter list

NVR parameter			
Operating System	Embedded linux OS		
AV(audio/video)input	Network Video	4CH	8CH
AV (audio/video) output	HDMI input	1ch, resolution: 1024x768, 1366x768, 1440x900,1920x1080p	
	VGA output	1ch, resolution: 1024x768, 1366x768, 1440x900,1920x1080p	
AV CODEC	Video Resolution	720P/960P/1080P	
Specification	Synch-playback	4CH	8CH
Video Control	Video/Capture mode	Maual、Time、Motion、Alarm	
	Playback mode	Realtime、Routine、Event	
	Backup	USB backup	
	Type	1*SATA interface	
HDD	Max Capacity	4 TB at most for each	
	Network Interface	1/4 adaptable RJ45 10M/100M, 2 WIFI interface	
External Interface	USB Interface	1/2 USB 2.0	
	Protocol	UPnP (play&plug). SMTP (email service) . PPPoE (dial-up). DHCP (Automatically Obtain an Ip address),etc...	
Others	Power	DC 12V 2A	
	Consumption(excluding HDD)	≤5W	
	Working Temperature	-10℃ —55℃	
	Working Humidity	10%—90%	
	Size	257x210x45mm	
	Weight(excluding HDD)	≤1Kg	

3 Open-package inspection

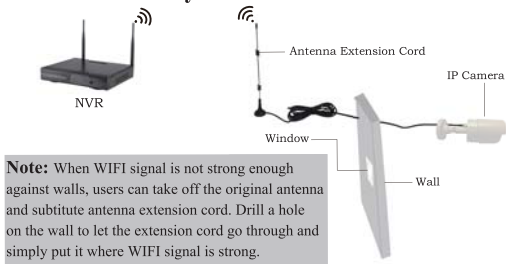
After receive product, pls open giftbox, remove NVR and put it on suitable place, check accessories. If any damage or lack, kindly pls contact to the distributor.

4 Installation diagram



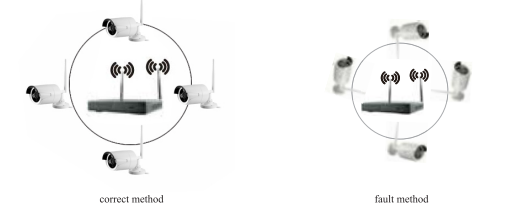
IPC Specification			
Specification	1.0MP	1.3MP	2.0MP
Operating System	Embedded Linux		
Image sensor	1/4" Progressive Scan Sensor	1/3" Progressive Scan Sensor	1/2.8" Progressive Scan Sensor
S/N Ratio	> 39.1 dB		
Resolution	1280 x 720 16 : 9 High Definition	1280 x 960 4 : 3 High Definition	1920 x 1080 16 : 9 High Definition
Minimum illumination	Color: 0.1 Lux B/W: 0.01 Lux		
OSD	Date Time & Title		
white balance	Auto		
Day & Night	Auto / Color / BW		
3D-DNR	Auto		
Mirror/Flip	On / Off		
Privacy Regional Shelter	4 Zone Selectable		
Stream	Dual-stream 1280x720@25fps 640x360@25fps	Dual-stream 1280x960@15fps 640x360@15fps	Tri streams 1920x1080@30fps 640x480@30fps 320x240@30fps
Anti-thunder Level	Standard IEC61000-4-5		
Power	DC12V — 1A		
Consumption	≤ 6W		
Interface	RJ45 / WIFI 802.11b/g/n		
Working temperature /humidity	-10 C to +50 C / 30% to 80% RH		
Storage temperature /humidity	-20 C to +60 C / 20% to 90% RH		
Size	205(L)×70(W)×55(H)mm		
Weight	500g		

5 Installation Way of Antenna Extension Cord



Note: When WIFI signal is not strong enough against walls, users can take off the original antenna and substitute antenna extension cord. Drill a hole on the wall to let the extension cord go through and simply put it where WIFI signal is strong.

6 Antenna location



The signal coverage of Antenna is similar to a round circle. Antenna located in center of the round circle, signal of surrounding is much stronger, but much weaker if antenna endpoints backoff direction. according to the signal divergency characteristics of antenna, and in order to guarantee the video quality, IPC antenna should try to keep in parallel or tangent with NVR antenna.

► Software operation

1 Add camera by matching code

Steps: right click the mouse on the main interface, and then click video management ,go into video management interface

Two ways for Wireless NVR to add IPC, “Code Add” and “Auto Add”. Adding camera by matching code, the camera transmits video images through wireless and NVR,IP is 172.20.14.X ;






Auto adding the camera, the camera transmits video images through the cable and NVR ;

Note: The camera has been matched by factory, no need to add other cameras. If you need to match one code, Firstly, take one network cable and connect to any NVR lan port and power on the device to make sure there is still have any channel can add one camera.



2 Video playback

Step: Right click mouse in main menu →Video playback →choose channel NO.
→choose record mode →in Search time,input beginning time and end time
→click search,recording will Come out ,drag time bar →click playback to start.

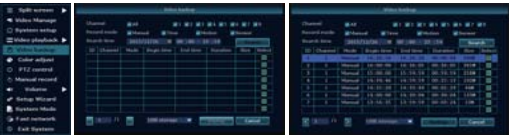
Tips: Playback icon introduction:  playback 1 fram previous  playback 1 frame next  play  pause  fast forward x2,x4,x.



3 Video backup

Step: Step: Right click mouse in main menu →Video backup →choose channel No.→choose record mode →in Search time ,input beginning time and end time
→click serach,recording will come out →choose the viedo which need to backup
→click video backup.

Tips: Support 32G U disk backup max ,recording will be packed every one hour.



9 Esee mobile application (IP PRO)-Add device

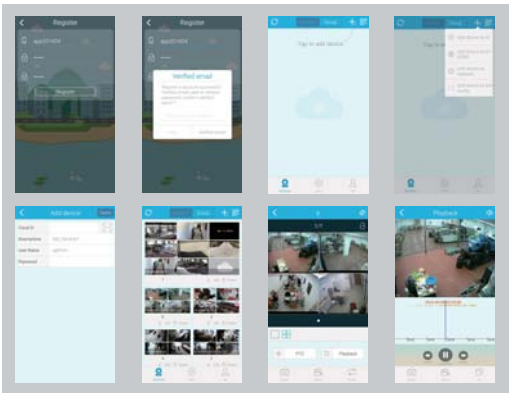
Step 1: Register

Step 2: Enter device interface

Step 3: Add device

Step 4: Added successfully. Click channel No.to get video

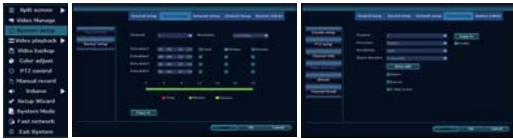
Step 5: Remote playback



4 Video detection

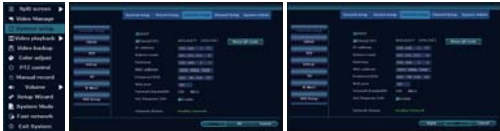
Step 1: Right click mouse in main menu →System setup →Record setup
→choose motion→choose all →click Copy to →click OK to save setting.

Step 2: Choose Video detection →set sensitivity as requirsd →choose motion
→set Alarm,Bizzar or Email as required→click Copy to→click OK to save setting .



5 Generate Esee ID

Precindition to generate Esee ID is that make sure video recorder is connected with network,and IP address is available Right click mouse in main menu →System setup →Network setup If user is familiar with LAN,then no need to choose DHCP which help to get IP address automa→tically. Manually input IP address and DNS address,video recorder will generate ID by network,once generate,it will appear in menu.



If user not familiar with LAN,or video recorder is in independent network,can choose DHCP to get availableIP address.

After video recorder get IP address ,it will generate Esee ID automatically.

Packing list

S/N	Item	Quantity
1	WIFI NVR	1pcs
2	Screw bag (4 screws for HDD)	1pcs
3	USB mouse	1pcs
4	1 meter network cable (for IPC code match)	1pcs
5	DC 12V2A power supply (for NVR)	1pcs
6	NVR user manual + Installation Instructor	1pcs
7	WIFI IP Camera	4/8 pcs
8	DC 12V/1A power supply (for IPC)	4/8 pcs
9	Screw bag (for IPC)	4/8 pcs
10	Antenna Extension Cord	1/2 (4CH/8CH) PCS

Notes:

1. Device will not in guarantee if caused by below reason:

A. Accident,negligence;disaster;mis-operation.

B. Do not conform to the environment and conditions,such as power improper, working temperature too high or too low, lightning stroke.ect.

C. Ever be maintained by other center which not belong to the real factory.

D. Goods already sold more than 12 months.



6 Access in LAN

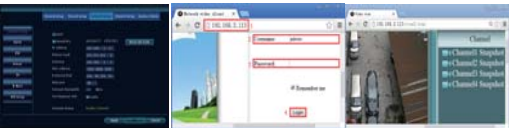
Access by computer in same router or use same switch with video recorder

Step 1: Right click mouse in main menu →System setup →Network setup
→check videorecorder IP address.

Step 2: Access by computer in same LAN ,input video recorder IP address and prot(If prot is 80, no need to input)in IE prowwer or any other browser.Then it will access LAN log in webpage,input user name and password,click log in.

Step 3: Once access successfully,can get video.

Tips: Please make sure video recorder and computer in same network segement.



7 Access in WAN

Access by computer not in same router with video recorder

Step 1: Right click mouse in main menu →System setup →Network setup
→check video recorder IP address.

Step 2: Open the IE browser,enter the www.e-seenet.com in the address bar. Then it will access log in webpage ,input ID,user name and password,click log in.

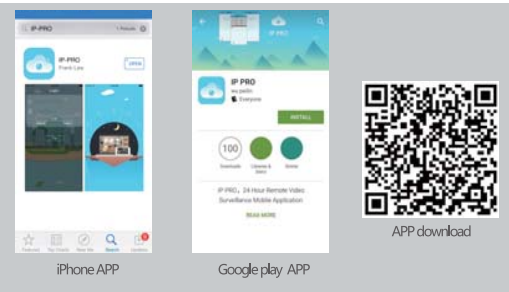
Step 3: Once access successfully,can get video recorder side upload and computer side download speed,each channel need above 20KB.



8 Mobile application download and installation

No. 1: Go to <http://www.dvr163.com/download/indexm.php?p=ipro> in mobile browser, enter download page, click install to download and install APP.

No.2: Please scan the QR code in manual to download APP.



APP download
scan here

