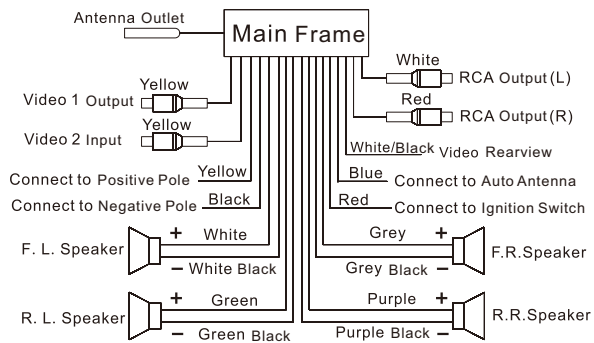


Connection Diagram



12V wiring diagram

Troubleshooting

Problem	Cause	Solution
Power indicator is off	1. The power cord is connected incorrectly.	Connect the power cord correctly. Check and connect both power cords.
No display	1. Yellow wiring is not connected to positive electrode of the battery.	Connect the yellow wiring to the positive electrode of the battery.
No sound	1. No power. 2. Speaker wiring is disconnected. 3. No sources in supported format on TF and U disk 4. The edge connector of TF and U disk is dirty leading to poor contact.	Connect the power cord. Connect the speaker wiring. Check the sources on TF and U disk. Clean with absolute alcohol.
Sound too low (noise)	1. Internal resistance of power supply is too loud. 2. The antenna cable is loose.	Replace with a new power supply. Push the antenna cable firmly into the plug.
Mono only	1. One of the speakers wiring is disconnected. 2. The power amplifier IC is damaged.	Connect the speaker wiring. Replace with a new power amplifier IC.

Please note: Specifications are subject to change without prior notice.

DECKLESS CAR MEDIA PLAYER

User Guide

Features

- Supports video formats such as RMVB/RM/FLV/3GP/MPEG/DVIX/XVID /DAT/VOB/AVI, etc.
- Supports audio formats such as MP3/WMA/WAV/OGG/APE/AAC/PLAC., etc.
- Supports image formats such as JPG/BMP/PNG, etc.
- Supports video rear review.
- 4 inch TFT display.
- Single video output.
- Dual audio output.
- Super HD FM radio, up to 18 preset channels.
- Supports large capacity TF card and USB device.
- Song name display function.
- Supports document navigation function.
- Power off memory function.
- Firmware upgrade.

Bluetooth Function

1. Matching the unit and mobile phone

Place your phone near the unit and switch on Bluetooth. Search for "TDC-547". Once found, click on it and enter password if necessary (0000) and connect.

2. Direct Communication via Bluetooth

To Make Calls

Once the unit and the phone are connected via Bluetooth, you can make calls directly from the unit.

To Answer Phone Calls

The unit will ring when there is an incoming call. Press BND/AS to answer the call or you can answer it directly on your phone.

To Hang Up

Press the "MOD" button to hang up the call or hang up on the phone directly.

3. Playing Music via Bluetooth

Once the phone and unit are connected via Bluetooth, press "MOD" button to change the mode to "BT". Enter the music player on your phone and the music will play through the unit.

Specifications

FM

Frequency Range -----87.5MHz~108MHz

Maximum Sensitivity-----≤ 37dB

Signal to Noise Ratio-----≥ 40dB

Stereo Separation-----≥ 20dB

AM

Frequency Range-----522kHz-1620kHz

Maximum Sensitivity-----≤ 40dB

MP5

Supported Format-----RMVB/RM/FLV/3GP/MPEG/DVIX/XVID/DAT/VOB/AVI

Music Storage-----U disk /TF card

Frequency Response----- (100Hz ~ 10 kHz) ± 8dB

Signal to Noise Ratio-----≥ 25dB

Channel Separation-----≥ 35dB

Harmonic Voltage Distortion-----≤ 5%

Stereo Channel Balance-----≤ 3dB

General

Voltage-----DC 12V (see label for specific)

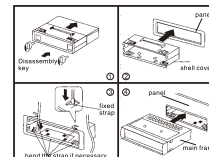
Output Power-----45WX4

Speaker Impedance-----4Ω~8Ω

Dimension of Main Frame-----178mm (W) X50mm (H)X 98 mm (D)

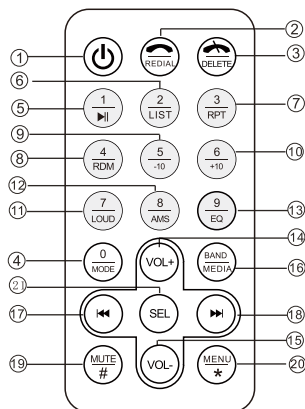
Installation

1. Please read the manual carefully before installation.
2. Installation of this product should be done by a suitably qualified person.
3. Once all other connections are completed, then connect the unit to the power cables.
4. To avoid short circuit, please wrap the exposed cable with insulation tape.
5. Tidy all loose cables after installation.
6. This unit is designed to work with a 12V (see label for specific) DC negative ground electrical system only. Please ensure your car meets the requirement.
7. Please connect the cables according to the colour. Incorrect connection may lead to damage of the unit and the electrical system of the vehicle.



Installation steps

Remote Control



1.Power

2.Redial

3.Delete

4.Mode

5.Plause

6.2/List

7. 3/Repeat

8.4/Random

9.5/-10

10.6/+10

11.7/LOUD

12.8/AMS

13.9/EQ

14.VOL+

15.VOL-

16.Band/Media

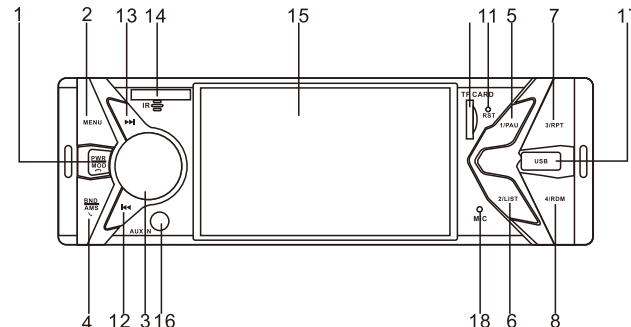
17.Previous

18.Next

19.Mute

20.Menu

Panel keys description



Panel keys description

1. Power/Mode button

In standby status, press or press and hold to turn on the device.

In power on status, press the knob to switch between FM, USB, B, SD and AUX, press and hold to turn off the device.

(Please note: the navigation system, B, for USB, SD are unavailable unless there is a relevant device).

2. Menu

In any state, press this button to enter the state of main menu. Turn the volume knob or press the previous or next button, the selection is as following: Radio-B-USB/SD-AUX IN- System setting, then press SEL button to enter this state.

3. SEL: press the knob to switch between VOL/BAS/TRE/FAD/EQ/LOUD, adjust the knob to right or left to set the relevant paramet ers.

VOL:00--40

BAS:-7--00-7

TRE:-7--00-7

BAL:R7--00--L7

FAD:R7--00--F7

EQ: OFF/CLASS/ROCK/FLAT

4. BAND/AMS:

This unit has only FM1, FM2, FM3, AM1 and AM2 bands. In radio status press BND/AS, the selection sequence is as follows:

FM1→ FM2→ FM3→ AM1→AM2

In radio status, press and hold BND/AS, the unit will automatically search the next channels and store the strong signal channels to [1] ~ [6] of FM1, FM2 and FM3. It will then play the channels in [1] ~ [6] of FM1, FM2 and FM3 in turn for 5 seconds, press BND/AS or [1] ~ [6] key to play the channel you want.

5. **1▶|** Numeric 1/ pause function
In audio/video status, press this button to play/pause. In FM status, press and hold this button to store a channel.
6. **2/List:** Numeric 2/list of songs
In audio/video status, press this button to go to the next channel. In FM status, press and hold this button to store a channel.
7. **3/RPT** Numeric 3 or repeat function
In the audio or video states, press to repeat one -repeat all function.
In the state of radio, it is for numeric 3 function. Press and hold for a few seconds to store the station.
8. **4/RDM:** Numeric 4 or random play function. In the state of audio, press the function of random play. In the state of radio, it is for numeric 4.
Press and hold for a few seconds to activate the storage function.
9. **5/-10**
In the state of audio, it is for -10 songs function. In the radio state, it is for 5 function. Press and hold for a few seconds to activate the storage function.
10. **6/+10**
In the state of audio, it is for +10 songs function. In radio mode, it is for number 6. Press and hold for a few seconds to activate the storage function.
11. **RESET:**
Press this key to restart the device.
12. **◀◀ key:**
In audio status, press this button to go to the previous song, in menu status, press it to go left or upward.
In FM status, press this button to search for previous stations, and stop search after it found stations; press and hold to then press to adjust the frequency.
In video status, press and hold to rewind, it will quit rewind function if no operation.
13. **▶▶ key:**
In audio status, press this button to go to the previous channel. In menu status, press this button to go right or downwards.
In FM status, press this button to search for next stations and to stop the search once a station is found. Press and hold this button for a few seconds to adjust the frequency.
In video status, press and hold to fast forward, it will quit fast forward function if no operation.
14. **Remote Reception Window**
15. **Display Window**
16. **AUX-IN Interface**
17. **TF Card Slot / USB Interface**
18. **MIC**

Menu

Main Menu Interface



Radio Interface



Audio Interface

