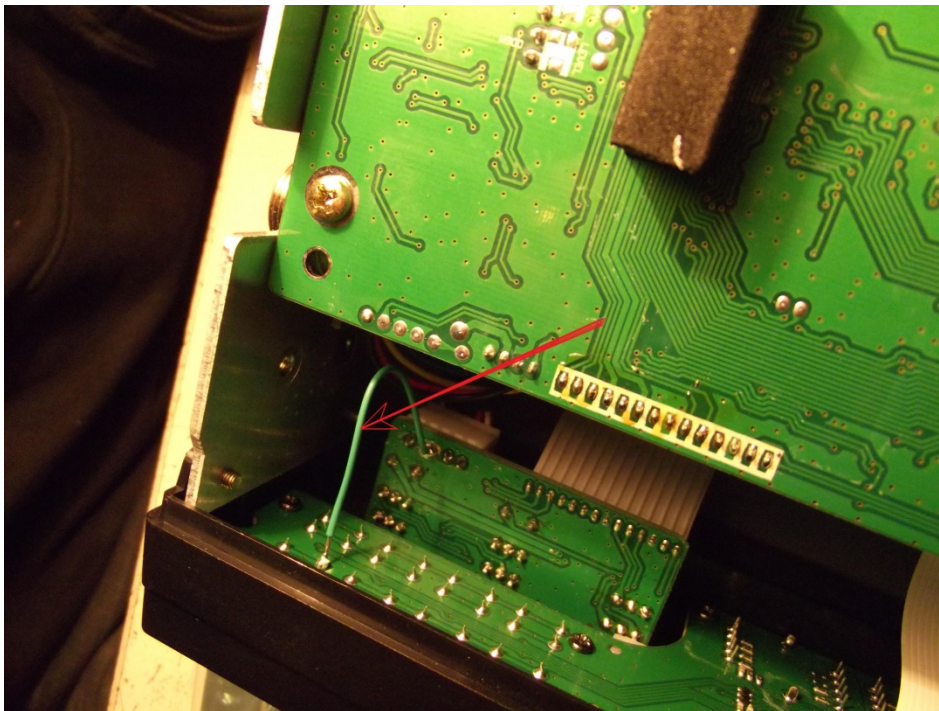


# MODIFICARE FRECVENTE

## SS 6900

Deschideti carcasa si taiati firul din spatele panoului frontal.

- 1) Resetati statia (tineti apasate simultan tastele FUNC+SCAN in timp ce porniti statia)
- 2) Statia Dvs. opereaza acum in gama de frecvente 25.615 Mhz - 28.305 Mhz
- 3) Pentru a va intoarce la configurarea initiala, 28.000 /29.700Mhz, trebuie sa programati statia cu ajutorul software-ului si sa reconectati firul taiat anterior



Open the top cover and cut the wire behind the front panel.

- 1) Make a reset (FUNC+SCAN keys and turn on the radio)
- 2) Your radio work now from 25.615 Mhz to 28.305 Mhz
- 3) To resume default setting 28.000 /29.700Mhz you must programming by software and soldering the wire.