
Video surveillance kit PNI House WiFi 400

NVR and 4 wireless cameras

USER MANUAL
NVR menu
(Android / iOS) app Software
HCMS (Windows)



IP CAMERA:



- 1 - Antenna
- 2 - Mounting bracket
- 3 - Adjust camera inclination angle
- 4 - Network Interface
- 5 - Power port 12V

NVR:



- 1 - Antenna connector
- 2 - Network Interface
- 3 - VGA Interface
- 4 - HDMI Interface
- 5 - USB port
- 6 - Power port 12V

IP CAMERA TECHNICAL SPECIFICATIONS:

Image Sensor	CMOS OV1045 1/4" 1.0MP 720P
Minimum illumination	0.5Lux@F1.2 (color); 0.05 Lux@F1.2 (B/L); 0Lux (IR ON)
Lens	3.6 mm
IR LED	36 pcs, maximum IR distance 30 m
SNR	≥39dB
Electronic Shutter	1/5 - 1/20,000s
Video compression	H.264 High profile / M-JPEG
Maximum resolution	1280x720@5-20fps
Video resolution	Main stream 1280×720, 640×480
	Secondaru stream 640×480, 480 x 360, 352×288, 320×240, 176×144
Output bitrate	CBR or VBR: 32K~10M
Motion Detection	Yes
Remote control on your phone	Supports Android/ iOS

Protocol	TCP/IP HTTP, NTP, IGMP, DHCP, UDP, SMTP, RTP, RTSP, ARP, DDNS, DNS, HTTPS 802.1XP2P
Network Interface	1x10/100 Mbps RJ45
WIFI	2.4G
WIFI distance	up to 100m (depending on the obstacles)
Power voltage	12V / 1A
Working temperature	-25°C ~ +60°C
Working humidity	0% - 90% RH (without condensation)

TECHNICAL SPECIFICATIONS FOR NVR:

	Operating system	Embedded LINUX
Video	Video compression	H.264
	Maximum resolution	1280 x 720px@5-20fps
	Video Inputs	8 x 720P
Audio	Audio compression	G.711
Recording and playback	Registration mode	Manual / Motion Detection / Programmed / Alarm
Network	Protocol	TCP/IP,HTTP,DHCP,UD,R TP,RTSP,FTP,NTP,SADP(automatic search IP), P2P
	Smartphone	Android/ iOS
	Browser	IE V9
WIFI	WIFI	reception module WIFI
	WIFI antenna	2 antennas 5 dB
	Range	up to 100 m (depending on the obstacles)
Connections	Video outputs	1 x VGA, 1 x HDMI
	Network Interface	RJ45 10/100 Mbps
	USB	2 x USB 2.0
Hard disk	HDD	Supports 1 HDD (max 4TB)
Others	Power voltage	12V / 3A
	Power consumption	5W (without HDD)
	Operating temperature	-25°C ~ +55°C
	Operating humidity	10% ~ 90%

NVR INSTALLATION:

- Open the NVR casing and install the hard drive (not included). Connect the data and power cables. Close the casing and fasten the screws.
- Connect the mouse to the USB port
- Connect a monitor to the NVR via an HDMI or VGA cable
- Connect the NVR to the internet with a network cable through a router / switch

Note: The NVR connects to the router only by cable. Wireless communication is only between NVR and cameras.

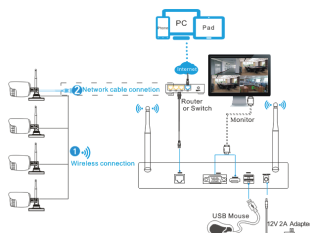
- Conectati NVR-ul la priza de curent folosind adaptorul 12 V / 3A inclus.
- Start the NVR. The red LED will light up.

CAMERA INSTALLATION:

- Make holes in the wall where the camera is intended to be installed
- Fix the camera and tighten the screws
- Connect the camera to a power source using the included 12V 1A adapter

Note: We recommend you the use of a protective box (at least IP55) for the connectors if the camera is placed outside.

- Adjust the tilt angle of the camera as required. The camera allows a 360 ° horizontal rotation and a 180 ° tilt on the vertical



Note: To ensure a good video quality, the camera antenna should be tilted so that it is parallel or in the same direction as the NVR antenna.

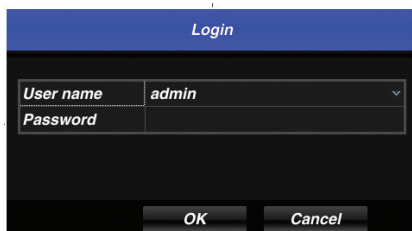
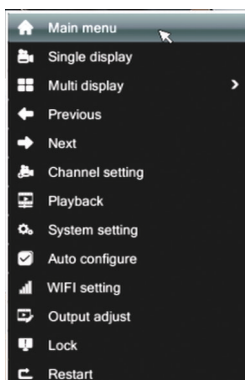


After the wireless connection between NVR and cameras is established (the operation may take a few minutes), the image captured by camcorders will be displayed on the monitor.



AUTHENTICATION:

Right click on the screen. Select any menu from the list. A pop-up with authentication interface will appear. The default user is “admin”. Leave the password field blank.



Note: Immediately after your first login, change your password:

Go to the Main menu - System - Users

Please enter the old password. If it is the first login in the system, the default user is not protected by any password; leave blank field.

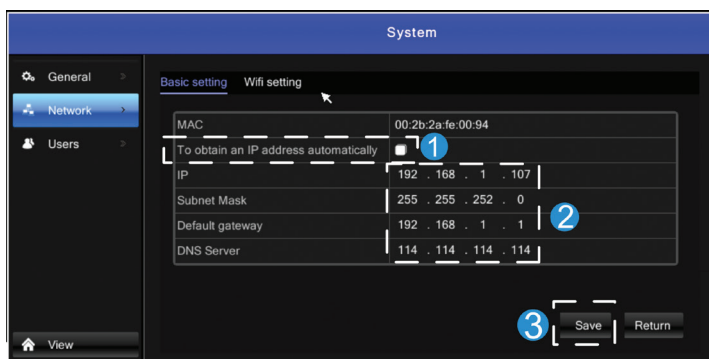
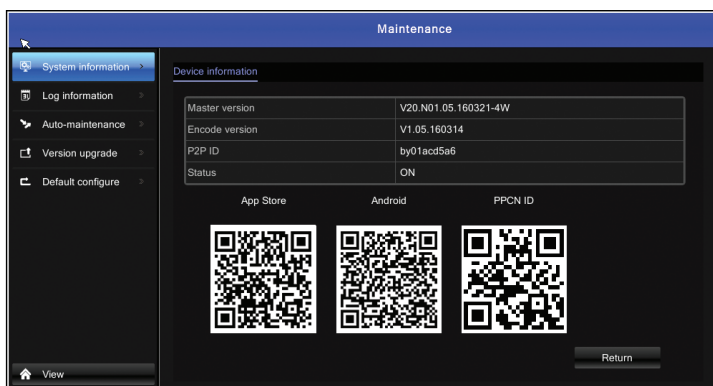
Enter your new password, confirm your password, click OK.

NETWORK CONFIGURATION:

You can remotely control the NVR only after you have correctly configured the network parameters:

- Connect the LAN cable to access the internet
- Go to Main menu - Maintenance - System information. If the P2P status is “ON” (network configuration) is OK. If not, proceed as follows: go to Main menu - System - Network. In the WiFi setting tab, highlight DHCP and click Save. The IP address will be automatically retrieved from your local network. Make sure your network is connected to the Internet.

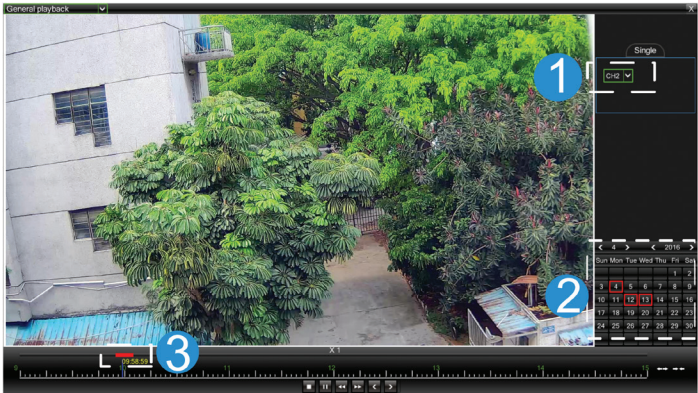
Configuration is successful if after update, the IP address is not 192.168.1.2
Otherwise, manually set the IP address and Gateway.



OTHER OPTIONS:

PLAYBACK:

Go to **Main menu - Playback**
Select channel and date. Double-click to play the record.

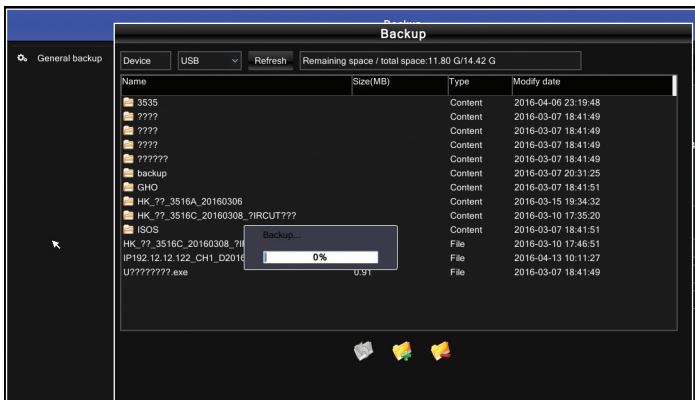


BACKUP:

Connect a USB stick to the USB port
Go to **Main menu - Backup**
Select channel, record type and time. Click Search.
In the interface that opens, select the desired file. Click Backup to save your USB stick registration.

Searching results					
Number	Channel	Starting time	Ending time	Type	Size(MB)
1	1	2016-04-04 16:12:48	2016-04-04 16:13:03	Timing	2.76
2	1	2016-04-04 16:14:19	2016-04-04 16:22:23	Timing	89.13
3	1	2016-04-04 16:22:22	2016-04-04 16:22:25	Manual	0.47
4	1	2016-04-04 16:22:22	2016-04-04 16:32:26	Timing	113.20
5	1	2016-04-04 16:32:25	2016-04-04 16:36:28	Timing	45.45
6	1	2016-04-04 16:36:25	2016-04-04 16:46:29	Timing	113.09
7	1	2016-04-04 16:46:26	2016-04-04 16:56:30	Timing	113.12
8	1	2016-04-04 16:56:27	2016-04-04 16:58:10	Timing	19.42
9	1	2016-04-12 10:10:00	2016-04-12 10:10:24	Timing	5.38
10	1	2016-04-12 10:10:23	2016-04-12 10:20:26	Timing	124.06
11	1	2016-04-13 09:54:57	2016-04-13 10:03:30	Timing	127.00

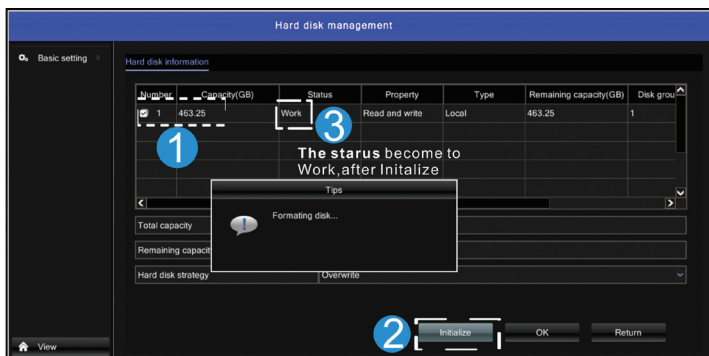
Navigation: < > Total: 1 pages, Current: page 1



HDD FORMAT

Note: The hard disk is not included in the package.

Right click on the screen. Go to Main menu - HD manager. Select the hard disk and click on Initialize. After finishing the formatting (which may take several minutes depending on the size), the NVR can start the recording operation. Each channel will display the “REC” icon.

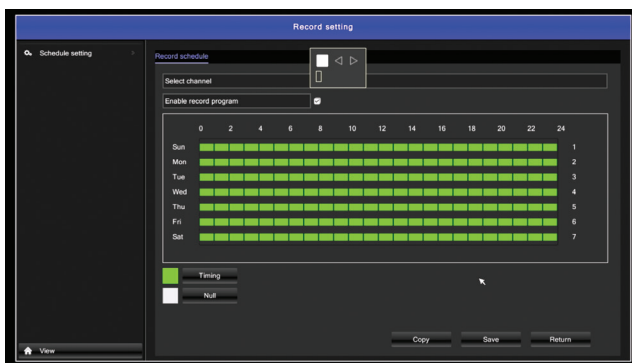


RECORDING:

Select the channel.

Select “**Timing**” (in the selected squares corresponding to weekdays and hours, the registration will be enabled) or “**Null**” (in the selected squares corresponding to weekdays and hours, the reboot will be disabled).

Click “**Save**”



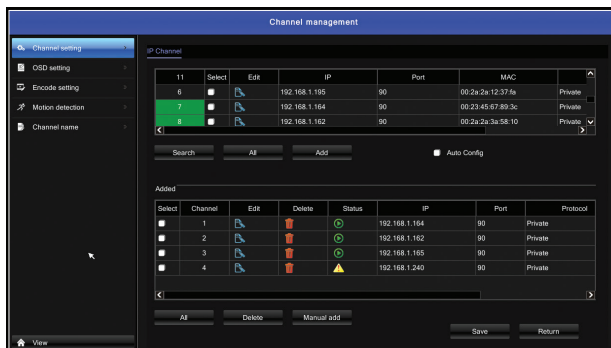
CHANNEL:

Add camera

Note: The NVR supports up to 8 cameras and is only compatible with PNI IP11MP 720p wireless video surveillance cameras

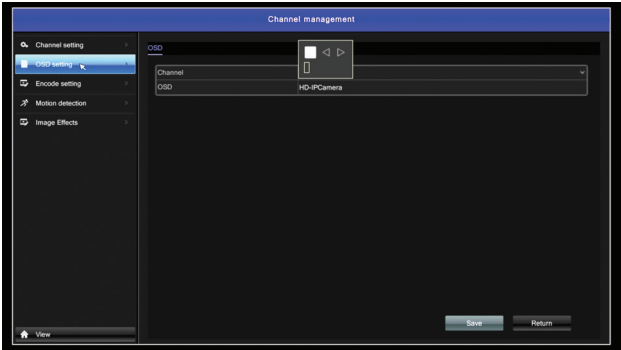
If you want to replace or add a camera to your system, follow the steps below:

- Connect the camera directly to the NVR through the network cable (it does not Search on the network because it has different IP classes)
- Go to **Main menu - Channel**, delete the offline cameras that have the icon next to them ⚠
- Click Search, select the camera to add, then click Add and Save,.
- Go back to the real-time viewing window, right-click and select WiFi setting
- Remove the network cable from the camera
- After 30 seconds, go back to the Main menu - Channel
- Click Search, select the camera to add, then click Add and Save,
- Repeat the above steps for each room you want to add to the system
- Click Save to complete the camera adding procedure. The newly added cameras will appear in the real-time viewing window.



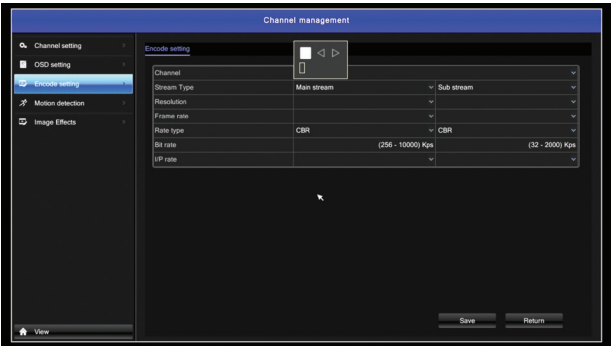
OSD display

Set the camera name on a particular channel.



Encode setting:

Set the video parameters for each channel, such as: resolution, frames per second, bit rates, etc. for primary and secondary flow.



Motion detection:

Enable or disable this function, set the detection area and the degree of sensitivity on a particular channel.

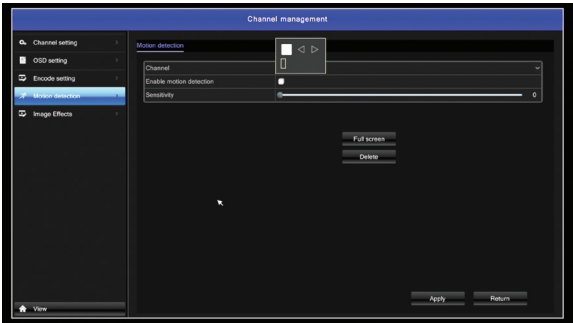
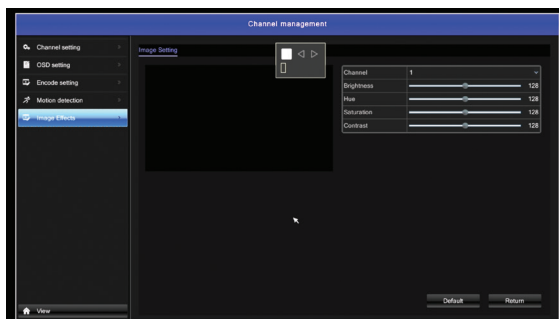


Image effects:

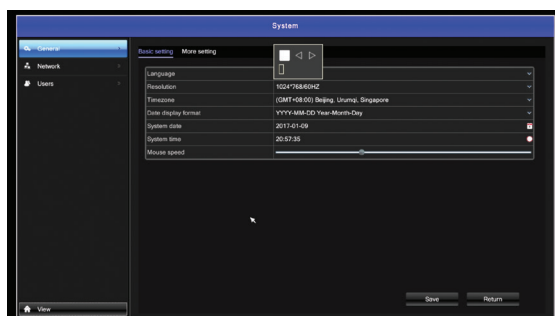
You can change the image parameters such as brightness, saturation, contrast.



SYSTEM:

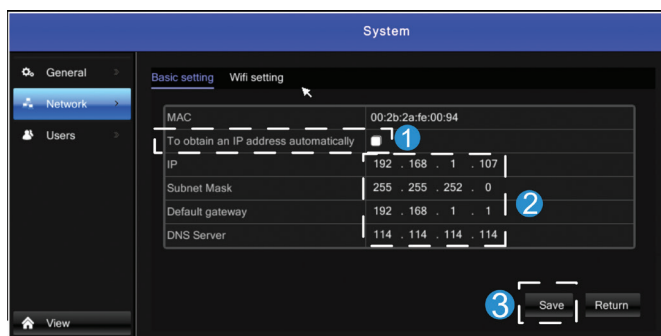
General:

You can change the menu language, display resolution, time, date, and mouse speed.



Network:

You can manually set network parameters or obtain them automatically by clicking "Obtain an IP address automatically" and "DHCP".



Users:

You can add users or change the password.

MAINTENANCE:

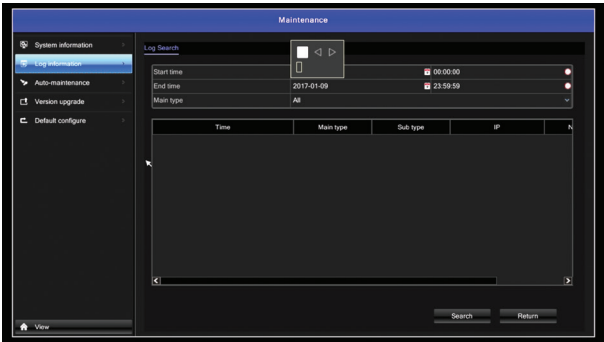
System information:

Provides information about version, status and P2P ID.



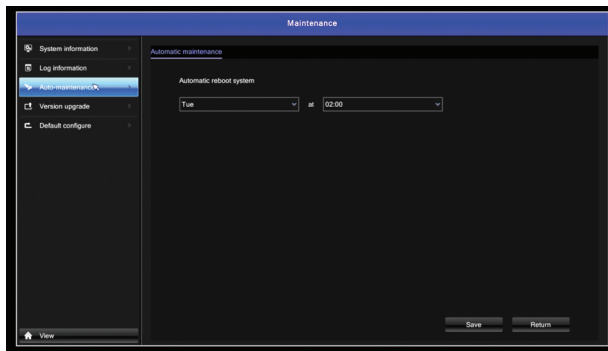
Log information:

Select the period of time to view the history of system activities: operation, registration, configuration etc.



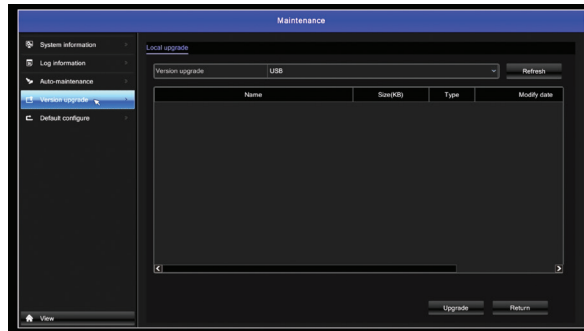
Auto maintenance:

At the scheduled time, the system restarts automatically.



Version upgrade:

Save the upgrade file to a USB stick in its root. Plug the stick into the USB port of the NVR. In the Maintenance interface, select the source and click Upgrade:



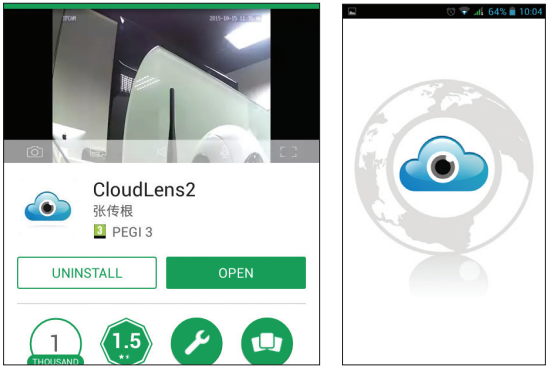
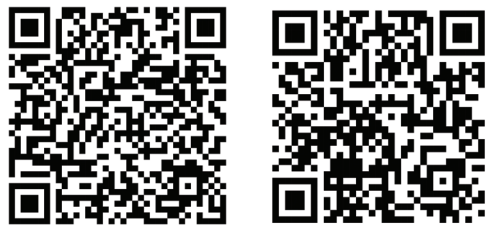
Default configure:

The system will automatically restart to reconfigure the factory settings.

REMOTE MONITORING VIA MOBILE PHONE

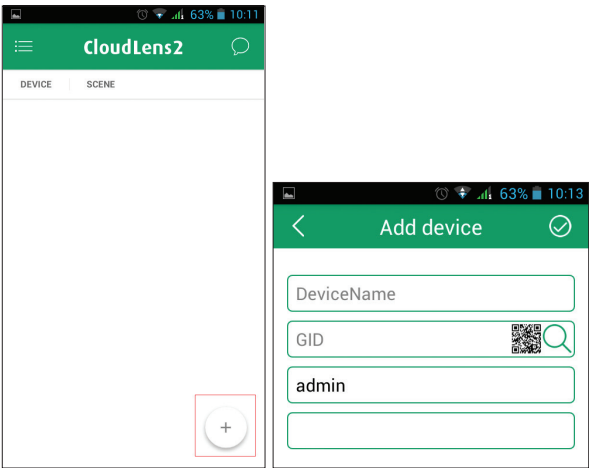
INSTALL “CLOUDBLENS2” APP

Method 1: scan below QR code
Method 2: Search CloudLens2 APP in Google Play or App Store. Once you’ve found the app, install it.




ADD CAMERA:

Once you’ve logged into your app, click the “plus” button on the main interface:

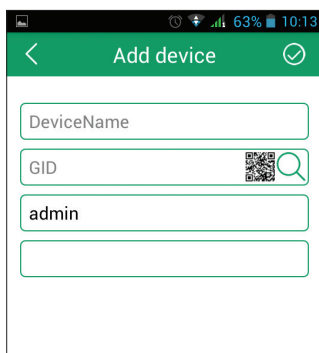


There are three ways to add a camera:

1. Add camera by scanning the QR code. Click . Scan the QR code from the NVR menu. Go to the Maintenance menu - System information.



2. Manually add: manually enter all the information of the room to be added:


The image shows a screenshot of a mobile application's 'Add device' screen. The screen has a green header with a back arrow, the text 'Add device', and a checkmark icon. Below the header are four input fields: 'DeviceName', 'GID' (with a QR icon to its right), 'admin' (pre-filled), and an empty field for a password. The status bar at the top shows the time as 10:13 and battery level at 63%.

DeviceName: name the camera.

GID: write the P2P ID of the camera (see above image).

Write password and user.

Note: Use the same username and password to login to the NVR menu. The default username is „admin” without password.

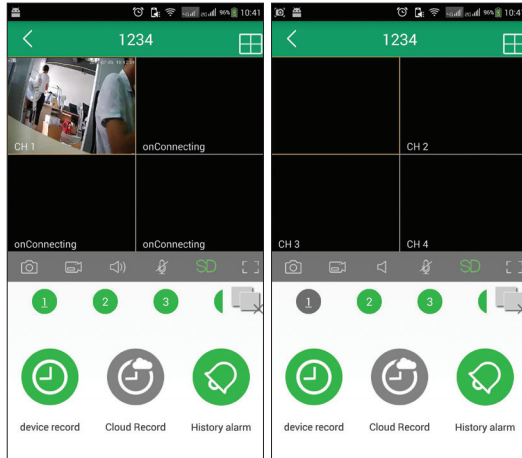
3. Network Search: Click . If the device is on the same network as the mobile phone, the application will find the cameras automatically.

Once you have added the cameras, they will appear in the main viewing interface.

Real-time viewing

Note: After the cameras have been added to the phone, the corresponding icon becomes green if the surveillance system is functional and gray if it is unavailable.

1. When you click on the desired device, the channels of the surveillance system will appear below.
2. Select the desired channel to display it on the screen. Channel number will turn green. You can see up to 4 channels at a time.



CloudLens2 functions:

The application supports PTZ, screenshots, video, editing, local and remote playback, alarm etc.

By clicking the Help button in the Extra Settings menu, you will access a user interface / buttons / function guide in the application.

Note: Not all features offered by the application are active for the kit PNI House WiFi400.

MONITORING VIA HCMS PC SOFTWARE:

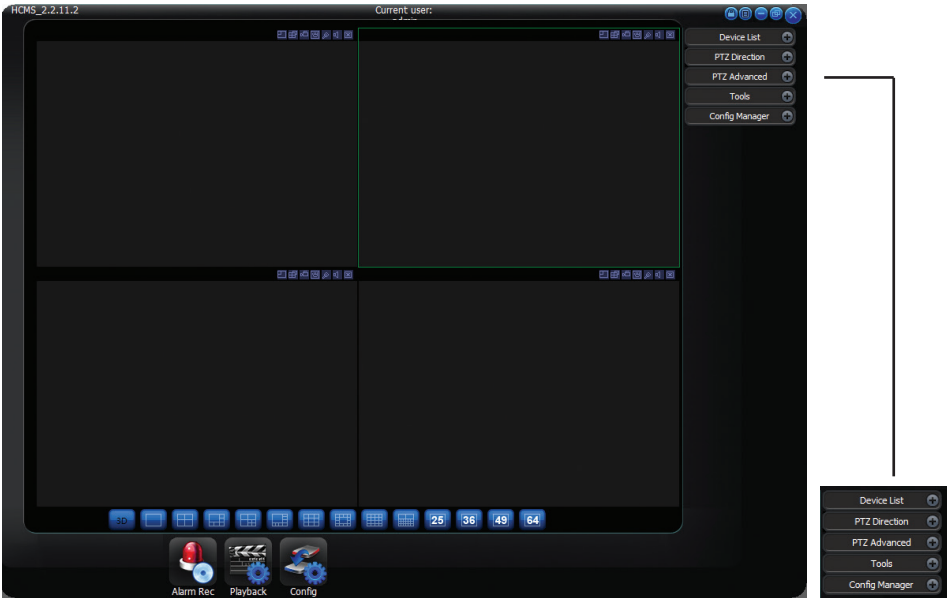
INSTALLATION:

The installation file can be found on the CD included in the package.

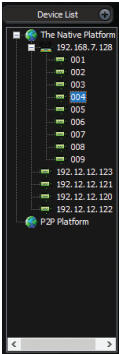
AUTHENTICATION:

Default username - admin, default password - admin. To change the default password, go to Config manager - User manager.

MAIN INTERFACE:

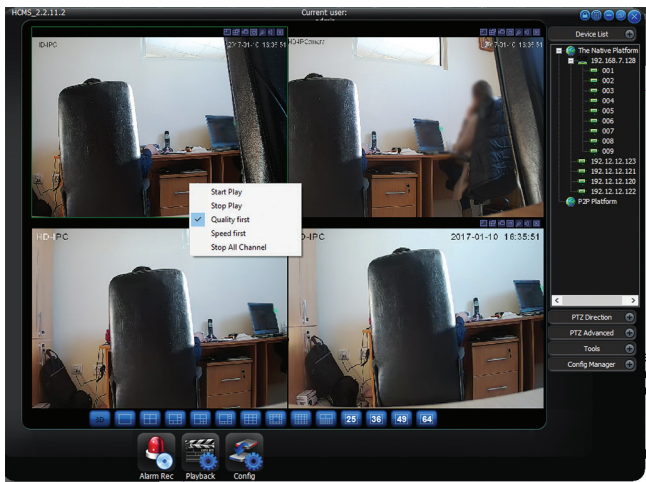


1. Device list:












In the Device list area, double-click on the channel you want to watch.





By right clicking on the window of the selected camera, you have a number of options: Start play, Stop play, Quality first, Speed first, Stop all channels.



Preview images:



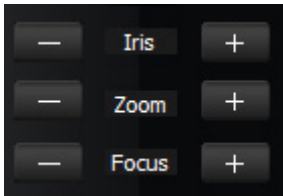
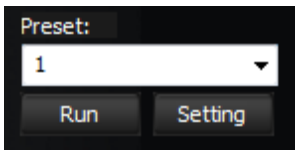
The user can choose how to view the channels (single channel or multiple channels):

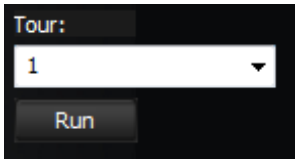
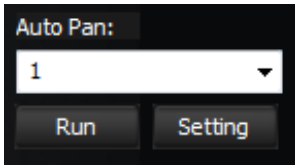
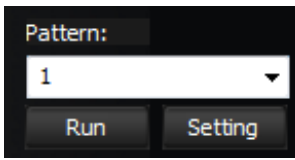
1		Full screen view mode
2		View 4 channels simultaneously
3		View 6 channels simultaneously
4		View 7 channels simultaneously
5		View 8 channels simultaneously
6		View 9 channels simultaneously
7		View 10 channels simultaneously
8		View 11 channels simultaneously
9		View 12 channels simultaneously

10		View 25 channels simultaneously
11		View 36 channels simultaneously
12		View 49 channels simultaneously
13		View 64 channels simultaneously

2. PTZ direction, PTZ advanced (Control PTZ):

The user can control the rotation of the camera (the camera must have PTZ function to benefit from these settings), such as: vertical and horizontal motion, zoom, focus, speed etc..

1		Control Arrows. The camera will rotate in the direction of the arrow.
2		Vertical and orthogonal rotation speed. The higher the number, the faster the speed will be
3		Iris: set the shutter opening according to the intensity of the light within the frame
4		Zoom: zoom in or zoom out the image
5		Focus: increase or decrease focal length
6		Preset points refer to the monitoring of certain areas with a PTZ camera. You can add more areas, which can then be accessed from memory.

7		The cruise route is the user-defined movement between two areas (preset points) with a PTZ camera. The move allows the user to monitor a larger area.
8		Horizontal scanning allows you to move the camera vertically to monitor the area vertically, using a camera that has the PTZ function.
9		Pattern scan is a user-set move from one preset point to another, and can include multiple preset points from multiple locations.

3. Tools

Start record plan / Stop record plan:

Starts or stops the scheduled recording.

Health report

Provides information about device status.

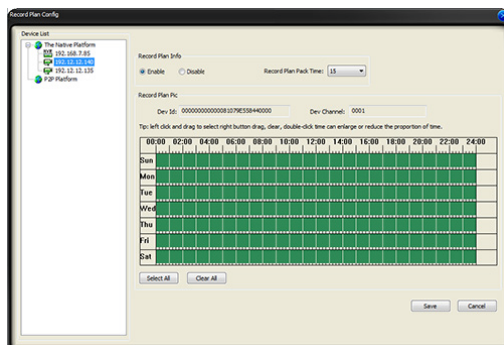
Log search (Istoric operatiuni)

Displays the history of operations in the selected range.

4. Config manager:

Set up recording plan:

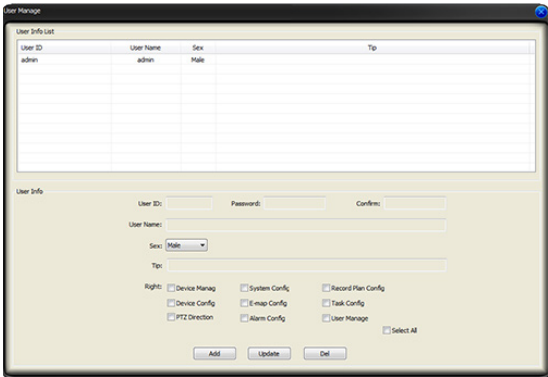
Select the camera to be configured on the left side.



Set up the registration plan according to time and day of the week.

User administration:

Go to **Config manager - User manager**



Add users and assign rights.

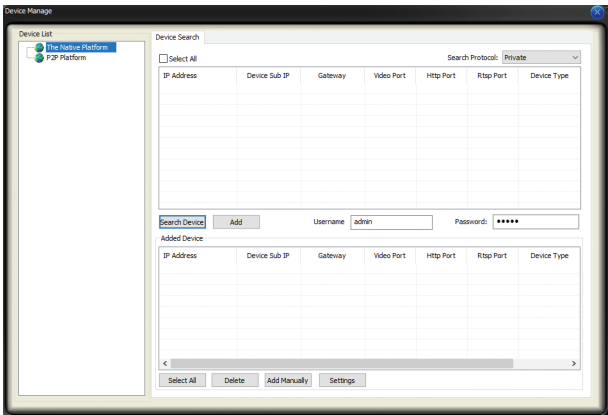
Device manager:

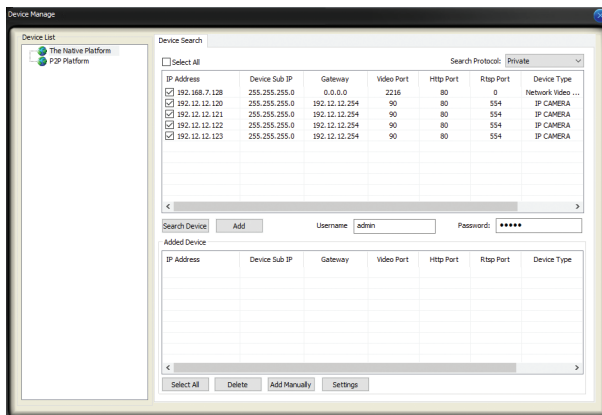
Add camera to system:

Automatically add:

Click the Search device button to search for a camera. The rooms you find will be listed. Click the Add button.

Note: The computer and the NVR must be connected to the same network.





Adding manually:

Click the Add manually button. Fill in the required data:

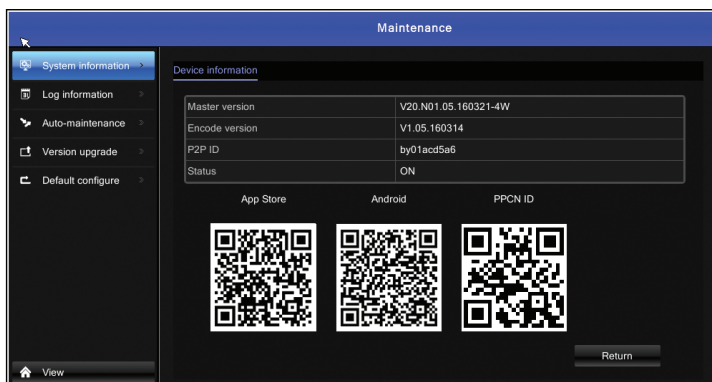
The 'Manually Add' dialog box contains the following fields and buttons:

- Device Type:** A dropdown menu currently showing 'P2P_GLNK'.
- UID:** An empty text input field.
- User ID:** A text input field containing 'admin'.
- Password:** A text input field with masked characters (dots).
- Buttons:** 'OK' and 'Cancel' buttons at the bottom.

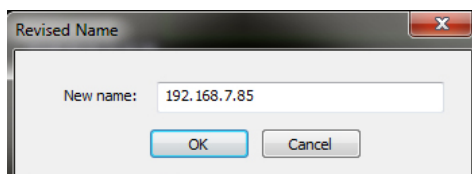
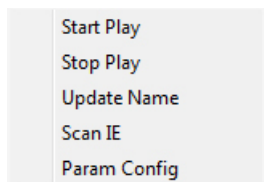
Notes:

The UID of the kit can be found in the NVR menu. Go to the Maintenance menu - System information.

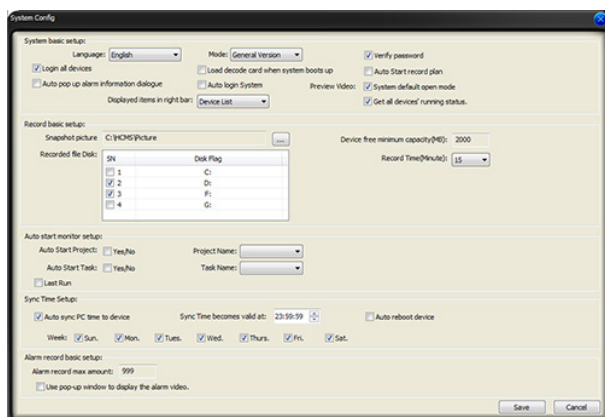
Use the same username and password to login to the NVR menu. The default username is „admin” without password.



The added cameras can be found in the Device list. You can change the name of a room by right clicking on a camera - Update name.



Configurare sistem:



In this interface there are 4 sections you can customize: System basic setup, Basic setup setup, Sync setup time, Alarm basic record setup.

Cloud login:

By creating an account in Cloud, you can add and manage multiple devices from the same account.